

Meet and Greet September 2023

Class- Nursery

Year leader- Anna Rooney



Park House
English School

Our school follows the English National Curriculum and EYFS curriculum, which is taught throughout the school. We study the subjects below:

- Maths
- English
- Phonics
- IPC (Global Citizenship, Art, Science, History and Geography)
- Music
- Computing through all subjects
- PE
- Languages- Arabic
- Qatar History
- PSHE
- Islamic for Muslim students



Park House
English School



Park House
English School

PRIDE

Perseverance



Responsibility



Independence



Dedication



Engagement



PRIDE:

At Park House English School, we take PRIDE in all aspects of our learning and development: PRIDE in our studies, PRIDE in our behaviour, PRIDE in our uniform, PRIDE in our environment, PRIDE in our relationships with others and PRIDE in our school.

What does PRIDE stand for?

PERSEVERANCE: Being resilient, even when faced with difficult or challenging circumstances.

RESPONSIBILITY: Taking responsibility for my learning, my attitude, my progress and my behaviour. Becoming a global citizen and being kind, caring and respectful in all I do.

INDEPENDENCE: Becoming a confident and independent learner. Always giving my best and taking ownership for overcoming my own difficulties and challenges.

DEDICATION: Knowing that developing knowledge, skills and understanding requires determination, effort and commitment to be truly successful.

ENGAGEMENT: Having enthusiasm, passion and a love for learning, both inside and outside of the classroom.



Park House
English School

Attendance and punctuality

Children should be in class by 7:30 for registration. Any time after this and they are considered and registered as late.

The front school gate opens at 7:00 for a staggered drop off they cannot arrive before then as staff are not on duty, the side gate for EYFS and KS1 opens at 7:10. (EYFS and KS1 can come into the front gate at 7am.) During the cooler months, they will only be allowed in the building at 7:30am.

Pick up is at **12 pm** - parents/guardians/carers **must** be prompt.



Park House
English School

Use of TEAMs

- Messages about the year group as well as pictures are posted via TEAMs.
- Children should not be in communication with each other socially via TEAMs.



Park House
English School

Learning Ladders

You have been emailed a log in for Learning Ladders.

You can log in and see your child's observations/
photographs.

We do not set homework, but we suggest that you
could discuss the observations with your child.



Park House
English School

Reading

Your child will go to the library and collect a book. This is for you to read with your child and introduce them to stories. Please remember their red library bags.

Caring Cubs: Sunday

Kind Cubs: Sunday



Park House
English School

School uniform

- Your child will be wearing our Park House uniform (please see the parents handbook for details).
- Please label the uniform with your child's name clearly.
- When your child has P.E they are required to come into school in their P.E kit.



Park House
English School

PRIDE

Assessments

We are always assessing the children through AfL but below outlines year group expectations. Arabic, Islamic and Qatar History exams have schedules that are sent out before any testing – this is dictated by the ministry.

Key Stage	Year	End of year assessments	Age
EYFS	Nursery	Internal school moderation, Baseline testing	3 - 4
	Reception		4 - 5
KS1	Year 1		Internal school assessments, GL Assessments (Maths and English)
	Year 2	6 - 7	
KS2	Year 3	7 - 8	
	Year 4	8 - 9	
	Year 5	9 - 10	
	Year 6	10 - 11	



Park House
English School

Reporting

Meet the Teacher evening (September)

Three reports per year (November/February/June)

1st report simple settling report

2nd report in depth report with targets

3rd report summary simple report

Three parent evenings (December/March/June) all completed online



Park House
English School

Your children's learning.

- Entry and Exit points – Parents are invited in
- Open afternoons
- Trips and visitors



Park House
English School



Inclusion Department



Park House
English School

- **Accessing Learning Challenges:**

- Despite class support, some students face difficulties in class.
- Inclusion Teams step in for additional assessments and support.

- **Collaborative Approach:**

- Parental support and collaboration are integral to student success.
- We value parents as key partners in their child's educational journey.

- **Transparent Communication:**

- Regular updates on student progress are provided.
- Parents are invited to participate in review meetings to discuss their child's development and next steps.



Reminders

Please ensure that your child has a **refillable water bottle**. Glass bottles and cans are not suitable. Sensible food should be provided – no chocolate or sweets. All lunch boxes should be clearly marked.

We have a **NO NUT** policy at school so please ensure all items are nut free including cereal bars. This also includes Nutella.



Park House
English School

Communication

First point of contact is the class teacher through email not via TEAMS:

anna.rooney@parkhouseschool.com

info@parkhouseschool.com

We do not give out telephone numbers and staff are not to engage in WhatsApp groups; this includes with class reps. You can email teachers in the same way. Mrs Hilton is holding a meeting with class reps about these expectations.

Teachers respond within 48 hours. No emails will be checked or sent over weekends or after 3pm.



Park House
English School

Celebrations

We wish to share birthdays with our children. However, we do have a number of children with severe food allergies.

No food will be given out by teachers.

Party bags can be sent in but will only be handed out at the end of the school day.



Park House
English School

Class Representative

Every class has a class rep, who sets up a WhatsApp group and communicates with the teachers about whole class matters.

This is not for individual child concerns – for these, please email the class teacher directly.

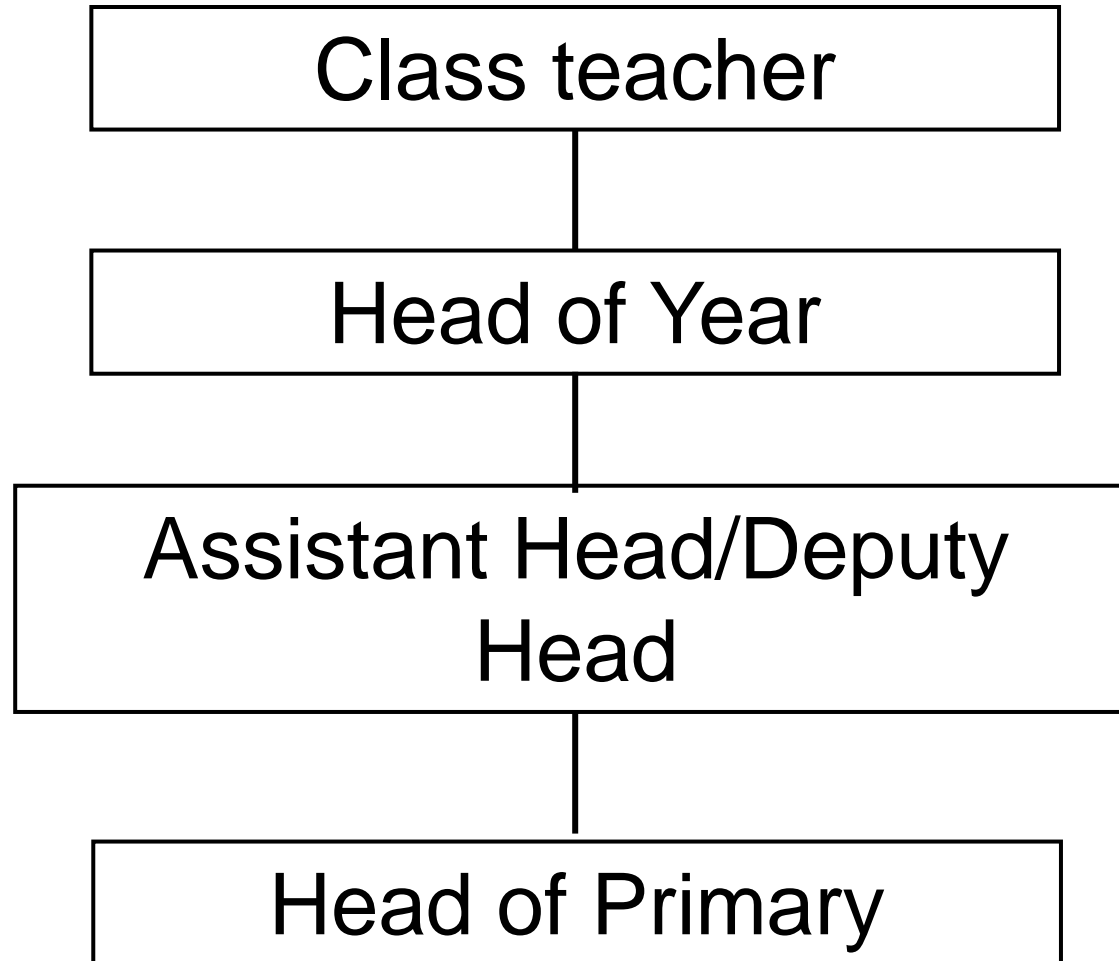
Who is our class rep?



Park House
English School



Communication



Park House
English School

Communication

Social media platforms at Park House:

Facebook

Twitter

Instagram

Our school website has information on everything school related.



Park House
English School

New Primary Handbook with all info here.



Park House
English School

PHES Designated Safeguard Leads and Deputy Safeguard Leads

SAFEGUARDING AT PARK HOUSE 
WE ARE HERE TO HELP.
WE ARE HERE TO LISTEN.


Natasha Hilton
Head of Primary


Rebecca Saunders
Head of Secondary

The people in these pictures are here to help you. If you have a worry or concern about anything, be it about yourself, a friend or something at home, they are here to listen.


Anna Stuart
Primary Deputy Head


Claire Sharkey
EA to Principal


Caroline Awad
MoEHE Coordinator


Michael MacDonald
Secondary Assistant Head


Olivia Mason
Secondary Assistant Head


Kerry Walton
Secondary Assistant Head

SAFEGUARDING AT PARK HOUSE 
WE ARE HERE TO HELP.
WE ARE HERE TO LISTEN.



Park House
English School

**Training
for
parents
will take
place
soon!**

**For any concerns please contact:
safeguarding@parkhouseschool.com or you can
complete a written sheet you can obtain from
Caroline at the reception desk.**



Park House
English School

Questions?