

Meet and Greet September 2023

Year 1

Head of Year 1 – Mrs Hannah Johnson



Park House  
English School

Our school follows English National Curriculum and EYFS curriculum, which is taught throughout the school. We study the subjects below:

- Maths
- English
- Phonics
- IPC (Global Citizenship, Art, Science, History and Geography)
- Music
- Computing through all subjects
- PE
- Languages – Arabic, French, Spanish
- Qatar History
- PSHE
- Islamic for Muslim students



---

Park House  
English School

PE – See Individual class timetable

Swimming – See Individual class timetable

Library – See Individual class timetable



Park House  
English School

Curriculum maps are on the school website here:

<https://parkhouseschool.com/key-stage-1/>



Park House  
English School



Year 1 - Medium Term Curriculum Map - Term 1.1 2023-2024



<p><b>ENTRY POINT</b></p> <p>Relaxation lounges in classrooms</p>	<p><b>IPC</b></p> <p>Health and Wellbeing: 1.06 Be able to follow strategies for managing a range of social situations 1.15 Be able to apply metacognitive strategies to improve their own learning</p> <p>International: 1.02 Be able to identify similarities and differences between the lives of children from different countries 1.07 Be able to articulate how they should be making a contribution to positive change</p>		<p><b>ENGLISH</b></p> <p>Spoken Language:</p> <ul style="list-style-type: none"> <li>• Give well-structured descriptions and explanations</li> <li>• Use spoken language to develop understanding through speculating, hypothesising, imagining and exploring ideas</li> <li>• Gain, maintain and monitor the interest of the listener(s)</li> </ul> <p>Word Reading:</p> <ul style="list-style-type: none"> <li>• Apply phonic knowledge and skills as the route to decode words</li> <li>• Respond speedily with the correct sound to graphemes (letters or groups of letters) for all 40+ phonemes, including, where applicable, alternative sounds for graphemes</li> </ul> <p>Reading Comprehension:</p> <ul style="list-style-type: none"> <li>• Becoming very familiar with key stories, fairy stories and traditional tales.</li> <li>• Drawing on what they already know or on background information and vocabulary provided by the teacher</li> <li>• Making inferences on the basis of what is being said and done</li> </ul> <p>Writing Composition:</p> <ul style="list-style-type: none"> <li>• Composing a sentence orally before writing it</li> <li>• Saying out loud what they are going to write about</li> </ul>
<p><b>MATHEMATICS</b></p> <p>Review of Maths objectives from Reception:</p> <ul style="list-style-type: none"> <li>• Have a deep understanding of number to 10, including the composition of each number.</li> <li>• Subitise up to 5.</li> <li>• Verbally count beyond 20, recognising the pattern of the counting system.</li> <li>• Compare quantities up to 10 in different contexts</li> <li>• Automatically recall number bonds to 10, including double facts.</li> <li>• Compare quantities up to 10 in different contexts</li> <li>• Explore and represent patterns within numbers up to 10</li> </ul> <p>Number and Place Value (within 10)</p> <ul style="list-style-type: none"> <li>• count to ten, forwards and backwards, beginning with 0 or 1 or from any given number.</li> <li>• count, read and write numbers to 10 in numerals and words.</li> <li>• identify and represent numbers using objects and pictorial representations beginning with 0 or 1, for from any given number</li> <li>• read and write numbers from 1 to 50 in numerals.</li> <li>• count to fifty, forwards and backwards, beginning with 0 or 1, from any given number.</li> <li>• read and write numbers from 1 to 10 in numerals and words.</li> <li>• count to ten, forwards and backwards, beginning with 0 or 1, from any given number</li> </ul>	<p><b>BRAINWAVES (2 weeks )</b></p> <p><b>IF YOU ARE HAPPY AND YOU KNOW IT (5 weeks )</b></p>		<p><b>EXIT POINT</b></p> <p>Wellness retreat in classrooms</p>
	<p><b>PSHE / PERSONAL LEARNING GOALS</b></p> <p>Being Me in My World Feeling special and safe Being part of a class Rights and responsibilities Rewards and feeling proud Consequences</p>	<p><b>TRIPS</b></p> <p>No trips planned for this term – children will be exploring their new classrooms and settling into Year One.</p>	

## PRIDE:

At Park House English School, we take PRIDE in all aspects of our learning and development: PRIDE in our studies, PRIDE in our behaviour, PRIDE in our uniform, PRIDE in our environment, PRIDE in our relationships with others and PRIDE in our school.

What does PRIDE stand for?

**PERSEVERANCE:** Being resilient, even when faced with difficult or challenging circumstances.

**RESPONSIBILITY:** Taking responsibility for my learning, my attitude, my progress and my behaviour. Becoming a global citizen and being kind, caring and respectful in all I do.

**INDEPENDENCE:** Becoming a confident and independent learner. Always giving my best and taking ownership for overcoming my own difficulties and challenges.

**DEDICATION:** Knowing that developing knowledge, skills and understanding requires determination, effort and commitment to be truly successful.

**ENGAGEMENT:** Having enthusiasm, passion and a love for learning, both inside and outside of the classroom.



Park House  
English School



Park House  
English School

# PRIDE

Perseverance



Responsibility



Independence



Dedication



Engagement



# Reading in Year 1

Children have been given a planner and the expectation is they should be reading daily for **20 minutes**.

Parents should be recording their child's reading in the planner **daily** with a comment and when they are in school this will be stamped by the teacher.



Park House  
English School

## Attendance and punctuality

Children should be in class by 7:30 for registration. Any time after this they are considered late.

The front school gate opens at 7:00 for a staggered drop off they cannot arrive before then as staff are not on duty, the side gate for EYFS and KS1 opens at 7:10. (EYFS and KS1 can come into the front gate at 7am.) During the cooler months, they will only be allowed in the building at 7:20am.

Pick up is at 14:10 and parents/guardians/carers **must** be prompt.

ECA collection is 15:00 and again, parents/guardians/carers **must** be prompt.



Park House  
English School



# TEAMs

- Messages about the year group as well as pictures are posted via TEAMs.
- Homework is sent via TEAMs.
- Children should submit all homework through TEAMs.
- Children should not be in communication with each other socially via TEAMs.



Park House  
English School

# Homework

Homework will be set every Thursday on TEAMS and may include:

- Maths challenge
- Phonics/English challenge
- Occasionally an IPC project
- Daily reading



Park House  
English School

# Assessments

We are always assessing the children through AfL but below outlines year group expectations. Arabic, Islamic and Qatar History exams have schedules that are sent out before any testing – this is dictated by the ministry.

Key Stage	Year	End of year assessments	Age
EYFS	Nursery	Internal school moderation, Baseline testing	3 - 4
	Reception		4 - 5
KS1	Year 1		Internal school assessments, GL Assessments (Maths and English)
	Year 2	6 - 7	
KS2	Year 3	7 - 8	
	Year 4	8 - 9	
	Year 5	9 - 10	
	Year 6	10 - 11	



Park House  
English School

# Reporting

*Meet the Teacher evening - 5<sup>th</sup> September 4pm-5pm*

Three reports per year (November/February/June)

1st report simple settling report

2nd report in depth report with targets

3rd report summary simple report

Three parent evenings (December/March/June) all completed **online**.



Park House  
English School

## Your child's learning.

- Entry and Exit points
- Open afternoons
- Trips and visitors



Park House  
English School



# Inclusion Department



Park House  
English School

- **Accessing Learning Challenges:**

- Despite class support, some students face difficulties in class.
- Inclusion Teams step in for additional assessments and support.

- **Collaborative Approach:**

- Parental support and collaboration are integral to student success.
- We value parents as key partners in their child's educational journey.

- **Transparent Communication:**

- Regular updates on student progress are provided.
- Parents are invited to participate in review meetings to discuss their child's development and next steps.



# Reminders

No mobile phones, iPads, iWatches or other electronic or expensive items.

We may ask you to bring items in at times, but we will keep them safe!



Park House  
English School

# Reminders

Please ensure that your child has a **refillable water bottle**. Glass bottles and cans are not suitable. Sensible food should be provided – no chocolate or sweets. All lunch boxes should be clearly marked.

We have a **NO NUT** policy at school so please ensure all items are nut free including cereal bars. This also includes Nutella.



Park House  
English School



# Communication

First point of contact is the class teacher through email  
NOT via TEAMS:

[firstname.lastname@parkhouseschool.com](mailto:firstname.lastname@parkhouseschool.com)

We do not give out telephone numbers and staff are not to engage in WhatsApp groups this includes with the class reps. You can email teachers in the same way. Mrs Hilton is holding a meeting with class reps about these expectations.

Teachers respond within 48 hours. No emails will be sent on weekends or after 3pm.



Park House  
English School

## Celebrations

We wish to share birthdays with our children. However, we do have a number of children with severe food allergies.

**No food will be given out by teachers.**

**Party bags can be sent in, but these must be individually packed.**



Park House  
English School

# Class Representative

Every class has or will have a class rep, who sets up a WhatsApp group and communicates with the teachers about whole class matters.

This is not for individual child concerns.

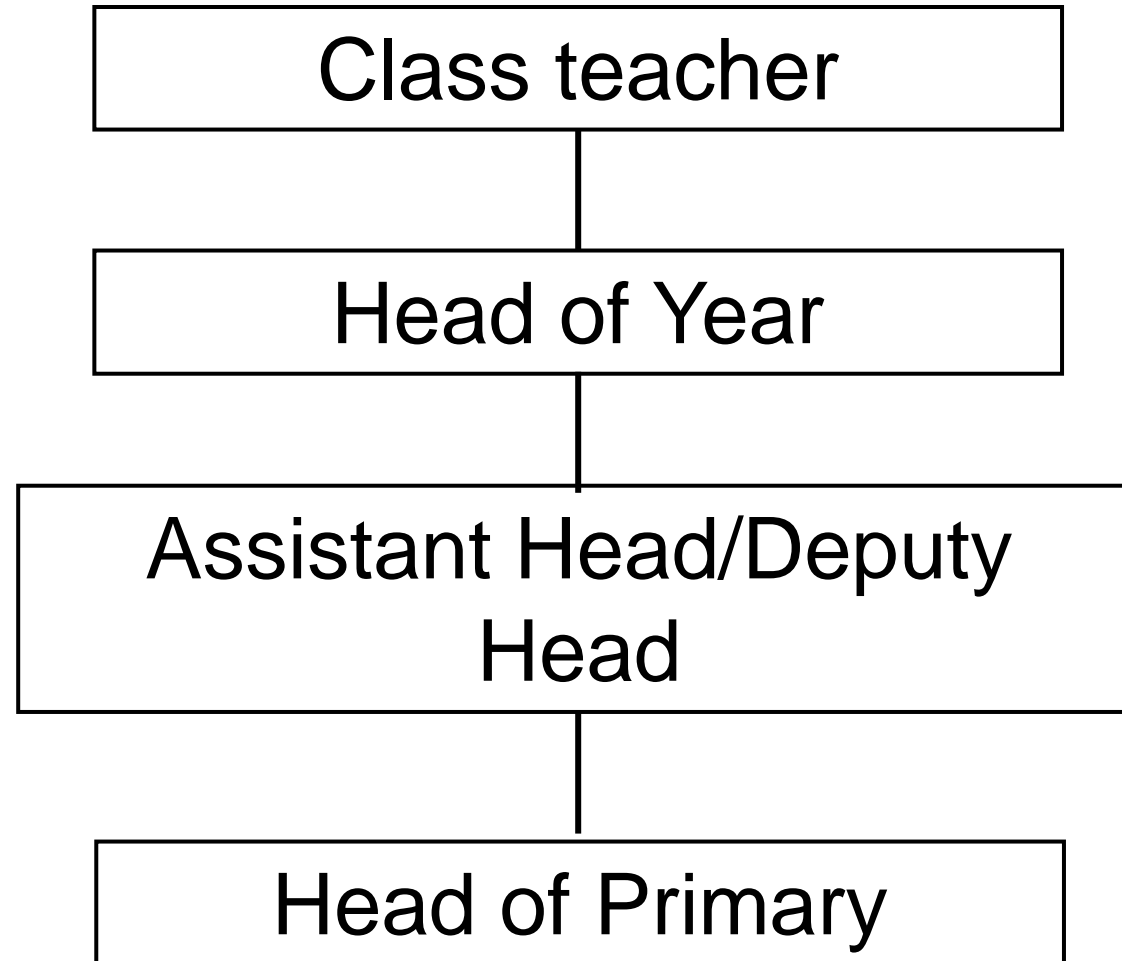
For individual concerns you must email the class teacher.



Park House  
English School



# Communication



Park House  
English School

# Communication

## Social media platforms at Park House:

Facebook

Twitter

Instagram

Our school website has information on everything school related.



Park House  
English School

New Primary Handbook with all info here.



---

Park House  
English School

# PHES Designated Safeguard Leads and Deputy Safeguard Leads



**SAFEGUARDING AT PARK HOUSE**

**WE ARE HERE TO HELP.**

**WE ARE HERE TO LISTEN.**

**Natasha Hilton**  
Head of Primary

**Rebecca Saunders**  
Head of Secondary

The people in these pictures are here to help you. If you have a worry or concern about anything, be it about yourself, a friend or something at home, they are here to listen.

**Anna Stuart**  
Primary Deputy Head

**Claire Sharkey**  
EA to Principal

**Caroline Awad**  
MoEHE Coordinator

**Michael MacDonald**  
Secondary Assistant Head

**Olivia Mason**  
Secondary Assistant Head

**Kerry Walton**  
Secondary Assistant Head



**SAFEGUARDING AT PARK HOUSE**

**WE ARE HERE TO HELP.**

**WE ARE HERE TO LISTEN.**



Park House  
English School

**Training  
for  
parents  
will take  
place  
soon!**

**For any concerns please contact:  
safeguarding@parkhouseschool.com or you can  
complete a written sheet you can obtain from  
Caroline at the reception desk.**



---

Park House  
English School

# Questions?