

Meet and Greet September 2023

Year 4



Park House
English School

Meet and Greet September 2023

Year 4P

Class Teacher – Mr. Ahmed Abdalla Mohammed
Learning Assistant – Mrs Jennifer Enunwa



Park House
English School

Meet and Greet September 2023

Year 4H

Class Teacher – Miss Hannah Martin
Learning Assistant – Mrs Eniko Halasz



Park House
English School

Meet and Greet September 2023

Year 4E

Class Teacher – Ms. Danielle Clark

Learning Assistant – Mrs. Eniko Halasz



Park House
English School

Meet and Greet September 2023

Year 4S

Class Teacher – Mrs. Katherine Corrigan
Learning Assistant – Mrs. Jennifer Enunwa



Park House
English School

Our school follows English National Curriculum and EYFS curriculum, which is taught throughout the school. We study the subjects below:

- Maths
- English
- IPC (Global Citizenship, Art, Science, History and Geography)
- Music
- Computing
- PE
- Languages- Arabic/Spanish/French
- Qatar History
- PSHE
- Islamic for Muslim students



Park House
English School



Year 4 - Medium Term Curriculum Map - Term 1.1 2023-2024



Park House
English School

ENTRY POINT

Escape Room

Children complete activities to unlock the padlock.

IPC

Art:

2.07 Be able to select materials and techniques to communicate an idea and be able to explain their selection

Health and Wellbeing:

2.06 Be able to select the most appropriate strategy for managing a range of social situations

2.15 Be able to apply metacognitive strategies and reflect on their effectiveness

International:

2.02 Be able to research commonalities between different places and cultures

IT:

E - Safety

ENGLISH

Simple Narratives (2 weeks)

Reading Comprehension:

- Checking that the text makes sense to them, discussing their understanding and exploring the meaning of words in context
- Asking questions to improve their understanding of a text
- Participating in discussions about both books that are read to them and those they can read for themselves, taking turns and listening to what others say
- Drawing inferences such as inferring characters' feelings, thoughts and motives from their actions

Writing:

- Writing from memory simple sentences, dictated by the teacher, that include words and punctuation taught so far.
- Discussing and recording ideas.
- Composing and rehearsing sentences orally.
- Planning and writing a simple narrative.
- Proof-reading for spelling and punctuation errors.
- Reading aloud their own writing, to a group, using appropriate intonation and controlling the tone and volume so that the meaning is clear.

MATHEMATICS

The children will be learning the skills below and applying them in different contexts.

- Revise key concepts from year 3 such as number bonds to 10 and 100.
- Recap times tables such as 2s, 3s, 4s, 5s, 8s and 10s.
- Recognise the place value of each digit in a four-digit number.
- Represent numbers in various representations.
- Be able to use and read from a number line.

BRAINWAVE 2 weeks

PSHE / PERSONAL LEARNING GOALS

Being in My World

- Celebrating Differences
- Challenging assumptions
- Judging by appearance
- Accepting self and others
- Understanding influences
- Understanding bullying
- Problem-solving
- Identifying how special and unique everyone is
- First impressions

TRIPS

Museum of Illusions

EXIT POINT

Design Technology – Make a model of relaxing space for mindful experiences.



Year 4 - Medium Term Curriculum Map - Term 1.2 2023-2024



Park House
English School

ENTRY POINT

Chocolate Learning Laboratory
Linked to taste, smell, touch, sight & hearing.

MATHEMATICS

Number: Addition and Subtraction

The children will be learning the skills below and applying them in different contexts.

- Add and subtract numbers up to 4 digits using the column method.
- Estimate answers to calculations using rounding
- Use inverse operation to check answers
- Solve addition and subtraction problems.

Measurement: Perimeter and Length

The children will be learning the skills below and applying them in different contexts.

- Know what perimeter means
- Measure the perimeter of rectangular shapes.
- Calculate the perimeter of rectangular shapes.

Number: Multiplication and Division

The children will be learning the skills below and applying them in different contexts.

- Multiply by 10, 100 and 1000.
- Divide by 10, 100 and 1000

IPC

Geography:

- 2.02 Be able to interpret maps of familiar and unfamiliar places, including digital maps
- 2.04 Be able to identify relevant data to answer questions
- 2.11 Be able to describe geographical features of the host continent
- 2.13 Be able to describe human activities that can cause or reduce environmental issues

History:

- 2.03 Be able to select and record relevant information including multiple sources
- 2.07 Be able to organise events and societies chronologically
- 2.09 Be able to describe results/consequences of historical events, situations

International:

- 2.07 Be able to reflect on their personal contribution to collective action

Science:

- 2.06 Be able to plan an investigation changing only one independent variable
- 2.07 Be able to make informed predictions
- 2.11 Be able to compare results to predictions and draw conclusions
- 2.12 Be able to record and describe the method and results in a variety of ways.

CHOCOLATE 6 weeks

PSHE / PERSONAL LEARNING GOALS

Healthy me

- Anti-social behaviour
- Emergency aid
- Body image
- Relationships with food
- Healthy choices Motivation and behaviour

TRIPS

n/a

ENGLISH

Simple narratives (2 weeks)

Stories with problems (4 weeks)

Spoken Language:

- Asking relevant questions to extend their understanding and knowledge
- Using relevant strategies to build vocabulary
- Articulating and justifying answers, arguments, and opinions
- Considering and evaluating different viewpoints, attending to and building on the contributions of others
- Giving well-structured descriptions, explanations and narratives, including expressing feelings

Word Reading :

- Applying their growing knowledge of root words, prefixes and suffixes
- Reading further exception words, noting the unusual correspondences between spelling and sound, and where these occur in the word
- Identifying how language, structure and presentation contribute to meaning
- Checking that the text makes sense to them, discussing their understanding and exploring the meaning of words in context

Reading Comprehension:

- Drawing inferences such as inferring characters' feelings, thoughts and motives from their actions, and justifying inferences with evidence.
- Asking questions to improve their understanding of a text.

Writing Composition:

- Composing and rehearsing sentences orally (including dialogue), progressively building a varied and rich vocabulary and an increasing range of sentence structures.
- Plan writing by discussing and recording ideas
- Organising paragraphs around a theme

EXIT POINT

The Chocolate EXPO



Year 4 - Medium Term Curriculum Map - Term 1.3 2023-2024



Park House
English School

ENTRY POINT

Destination Decisions

- Packing Pandemonium
- Departure Dash
- Daring Decent
- Lost Luggage
- Mixed Up Money

IPC

Art:

2.07 Be able to select materials and techniques to communicate an idea and be able to explain their selection

Health and Wellbeing:

2.06 Be able to select the most appropriate strategy for managing a range of social situations

2.15 Be able to apply metacognitive strategies and reflect on their effectiveness

International:

2.02 Be able to research commonalities between different places and cultures

ENGLISH

Persuasive writing (4 weeks)

Poetry (2 weeks)

Spoken language:

- Listen and respond appropriately to adults and their peers
- Speak audibly and fluently with an increasing command of Standard English
- Gain, maintain and monitor the interest of the listener(s)
- Select and use appropriate registers for effective communication

Reading comprehension:

- Prepare poems and play scripts to read aloud and to perform, showing understanding through intonation, tone, volume and action
- Discuss words and phrases that capture the reader's interest and imagination
- Recognise some forms of poetry [for example, free verse, narrative poetry]
- Read books that are structured in different ways and reading for a range of purposes
- Prepare poems and play scripts to read aloud and to perform, showing understanding through intonation, tone, volume and action.

MATHEMATICS

Number: Multiplication and Division

- Using efficient methods of multiplication.
- Investigating written methods of multiplication
- Multiplying 2-digits by a 1-digit numbers
- Multiplying 3-digits by a 1-digit number
- Dividing 2-digits by a 1-digit number
- Dividing 3-digits by a 1-digit number
- Investigating and solving correspondence problems

Length and Perimeter

- Measure in kilometres and metres
- Equivalent lengths
- Perimeter on a grid
- Perimeter of rectilinear shapes
- Find missing lengths in rectilinear shapes
- Calculate the perimeter of rectilinear shapes
- Perimeter of regular polygons
- Perimeter of polygons

TRAVEL AND TOURISM

7 weeks

PSHE / PERSONAL LEARNING GOALS

Being Me in My World

- Being part of a class team
- Being a school citizen
- Rights, responsibilities and democracy
- Rewards and consequences
- Group decision-making
- Having a voice
- What motivates behaviour

TRIPS

Aviator Lounge

EXIT POINT

Aviation Activation

Role Play using the auditorium.

4P



Park House English School Timetable 4P

	REG	2	3	4	5	6	7	Yr4 & uKS2	9	10	11	12	13	14	15	Yr4 & uKS2	Yr4 & uKS2 Play	18	19	20
	07:30	07:50	08:10	08:30	08:50	09:10	09:30	09:50	10:10	10:30	10:50	11:10	11:30	11:50	12:10	12:30	12:50	13:10	13:30	13:50
Sunday	Registration	Maths			PT PE ASTRO		Spellings	Break	GR	Arabic PMR/ French			IPC			Lunch	Play	PSHE		handwriting
Monday		Islamic Studies/Extended Project ISE (4p/4H)			Maths				Spellings	English			MU PE GYM		GR			Additional Arabic ICT		
Tuesday		Qatar History			Maths				English	GR	IPC			IPC						
Wednesday		Swimming			Spelling s	RM Music PMR	Handwriting		Additional Arabic			GR	English					Library	KS2 Assembly	
Thursday		English			Maths				Islamic Studies/Extended Project ISE MPR (4P/4H)			Arabic MPR/ Spanish			GR			IPC		Class assembly

4H



Park House
English School

مدرسة المنيرة الإنجليزية
PARK HOUSE ENGLISH SCHOOL

Park House English School Timetable 4H

	REG	2	3	4	5	6	7	Yr4 & uKS2 Snack	9	10	11	12	13	14	15	Yr4 & uKS2 Lunch	Yr4 & uKS2 Play	18	19	20
	07:30	07:50	08:10	08:30	08:50	09:10	09:30	09:50	10:10	10:30	10:50	11:10	11:30	11:50	12:10	12:30	12:50	13:10	13:30	13:50
Sunday	Registration	Maths			AH PE POO		Guided Reading	Break	HW/Spelling	Arabic PMR/ Spanish			English			Lunch	Play	IPC		
Monday		Islamic Studies/Extended Project ISE - Ahmed			Maths				English	Guided Reading	SM PE ASTRO		HW/Spelling	Additional Arabic ICT - Me						
Tuesday		Qatar History			Maths				English	Guided Reading	IPC			HW/Spelling	Library			HW/Spelling		
Wednesday		Swimming			IPC		RM Music PMR		NH Additional Arabic ICT/ Extended Project - Me	English			Guided Reading	HW/Spelling	KS2 Assembly					
Thursday		Maths			IPC				Islamic Studies/Extended Project ISE MPR - Ahmed	NH Arabic MPR/ French			Guided Reading	PSHE				Y4 Assembly		

4E



Park House
English School

	REG	2	3	4	5	6	7	Yr4 & uKS2 Snack	9	10	11	12	13	14	15	Yr4 & uKS2 Lunch	Yr4 & uKS2 Play	18	19	20
	07:30	07:50	08:10	08:30	08:50	09:10	09:30	09:50	10:10	10:30	10:50	11:10	11:30	11:50	12:10	12:30	12:50	13:10	13:30	13:50
Sunday	Registration	Swimming		Qatar History			Break	FO Additional Arabic ICT/ Extended Project			RM Music PMR	PSHE		GR	Lunch	Play	FO Additional Arabic ICT/ Extended Project			
Monday		Islamic Studies/Extended Project ISE		Maths				MU PE GYM		English		Spelling & H/W		FO Arabic MPR/ French						
Tuesday		Maths		English				MU PE GYM		GR	Library	Spelling & H/W		IPC						
Wednesday		Maths		FO Arabic MPR/ Spanish				English		IPC			GR	KS2 Assembly						
Thursday		Maths		English				Islamic Studies/Extended Project ISE MPR		IPC			GR	Spelling &H/W			Y4 Assembly			

4S



Park House
English School

مدرسة المنتزة الانجليزية
PARK HOUSE ENGLISH SCHOOL

Park House English School Timetable 4S

	REG	2	3	4	5	6	7	Yr4 & uKS2 Snack	9	10	11	12	13	14	15	Yr4 & uKS2 Lunch	Yr4 & uKS2 Play	18	19	20
	07:30	07:50	08:10	08:30	08:50	09:10	09:30	09:50	10:10	10:30	10:50	11:10	11:30	11:50	12:10	12:30	12:50	13:10	13:30	13:50
Sunday	Registration	Swimming			Qatar History			Break	FO Additional Arabic ICT/ Extended Project			IPC	RM Music PMR	HW/SP	GR	Lunch	Play	FO Additional Arabic ICT/ Extended Project		
Monday		Islamic Studies/Extended Project ISE			Maths				English			GR	HW/SP	IPC				FO Arabic MPR/ Spanish		
Tuesday		English				GR	HW/SP		Maths	SM PE		Maths			IPC					
Wednesday		GR	MU PE GYM		FO Arabic MPR/ French				English			Maths			HW/SP			KS2 Assembly		
Thursday		HW/SP	GR	PSHE		English			Islamic Studies/Extended Project ISE MPR			IPC		Library				IPC		Yr 4 Assembly

PRIDE

Perseverance



Responsibility



Independence



Dedication



Engagement



Park House
English School

PERSEVERANCE
RESPONSIBILITY
INDEPENDENCE
DEDICATION
ENGAGEMENT



PRIDE:

At Park House English School, we take PRIDE in all aspects of our learning and development: PRIDE in our studies, PRIDE in our behaviour, PRIDE in our uniform, PRIDE in our environment, PRIDE in our relationships with others and PRIDE in our school.

What does PRIDE stand for?

PERSEVERANCE: Being resilient, even when faced with difficult or challenging circumstances.

RESPONSIBILITY: Taking responsibility for my learning, my attitude, my progress and my behaviour. Becoming a global citizen and being kind, caring and respectful in all I do.

INDEPENDENCE: Becoming a confident and independent learner. Always giving my best and taking ownership for overcoming my own difficulties and challenges.

DEDICATION: Knowing that developing knowledge, skills and understanding requires determination, effort and commitment to be truly successful.

ENGAGEMENT: Having enthusiasm, passion and a love for learning, both inside and outside of the classroom.



Park House
English School

PE and Hygiene

With the weather still being very humid and hot, please encourage your child to be mindful of their personal hygiene during PE days. Children can bring a small roll-on deodorant and wet wipes in their bags to freshen up after their lesson, if they wish to do so.

Swimming day – Children to wear their normal uniform to school and change before the lesson.

ECA – Children to wear normal uniform unless they have a PE lesson on the same day and can change before going to the ECA at 2:10pm.



Park House
English School

Reading

Children have been given a planner and the expectation is they should be reading daily for 15 minutes.

Parents/student should be recording their reading in the planner daily with a comment about their reading and understanding.

When they are in school this will be signed/stamped by the teacher/LA.



Park House
English School

Read Write Inc. Spelling

- Spelling programme for Years 2-6
- Builds on what the children have learnt in Phonics at Key Stage 1
- Children learn the spelling rules and practice spellings weekly in context
- Children work from a spelling book with a variety of teacher led activities, paired work and independent activities
- Children will have a spelling log where they record the words they find difficult to spell that they can practice at home with an adult
- The programme teaches a variety of strategies to support the children to spell
- In class assessment built into spelling activities and teacher led



Park House
English School

Attendance and punctuality

Children should be in class by 7:30 for registration. After this, they are considered late between 7:35 – 7:45. If your child arrives later than this then they must register with the reception before attending class.

The school gates open at 7:00 for a staggered drop off. They cannot arrive before then as staff are not on duty. They are not allowed in the building until 7:20 am (They will be sent to the auditorium or sports hall in the hot weather months).

Pick up is at 2:10 or 3pm for ECAs. Parents/carers/drivers **must** be prompt, please.



Park House
English School

Use of TEAMS

- Homework is sent via TEAMS.
- Children should submit all homework through TEAMS.
- Children should not be in communication with each other socially via TEAMS.
- Only children should communicate via TEAMS
– Parents via email.



Park House
English School

Homework

Assigned each Thursday afternoon at 2:30pm, to be uploaded & returned by the following Wednesday 3:30pm.

TT Rockstars (10 mins) & reading (15 mins) should be completed every night.



Park House
English School

Assessments

We are always assessing the children through AfL but below outlines year group expectations. Arabic and Islamic exams have schedules that are sent out before any testing – this is dictated by the ministry.

Key Stage	Year	End of year assessments	Age
EYFS	Nursery	Internal school moderation, Baseline testing	3 - 4
	Reception		4 - 5
KS1	Year 1		Internal school assessments, GL Assessments (Maths and English)
	Year 2	6 - 7	
KS2	Year 3	7 - 8	
	Year 4	8 - 9	
	Year 5	9 - 10	
	Year 6	10 - 11	



Park House
English School

Reporting

Meet the Teacher evening (September)

Three reports per year (November/February/May)

1st report simple settling report

2nd report in depth report with targets

3rd report summary simple report

Three parent evenings (December/March/June) all completed online



Park House
English School

Your children's learning

Entry and Exit points:

January 2024 Travel and Tourism EP

Open afternoons – TBC

Trips and visitors – Each term there will be at least one main trip or visit.

Term 1 – Chocolate workshop visit

Term 2 – 321 Museum/Nada Mohammed visit

Term 3 – Blue Pearl Water Sports



Park House
English School

Reminders

Do please ensure that your child has two drinks – carried in a non-breakable container. Glass bottles and cans are not suitable. Sensible food should be provided – no chocolate or sweets. We suggest a sandwich and a piece of fruit. All lunch boxes should be clearly marked.

We have a NO NUT policy at school so please ensure all items are nut free including cereal bars, this also includes Nutella.



Park House
English School

Reminders

No telephones, iPads, iWatches
or other electronic items.



Park House
English School

Communication

First point of contact is the class teacher through email not via TEAMS:

AhmedAbdalla.Mohammed@parkhouseschool.com

Hannah.Martin@parkhouseschool.com

Danielle.Clark@parkhouseschool.com

Katherine.Corrigan@parkhouseschool.com

info@parkhouseschool.com

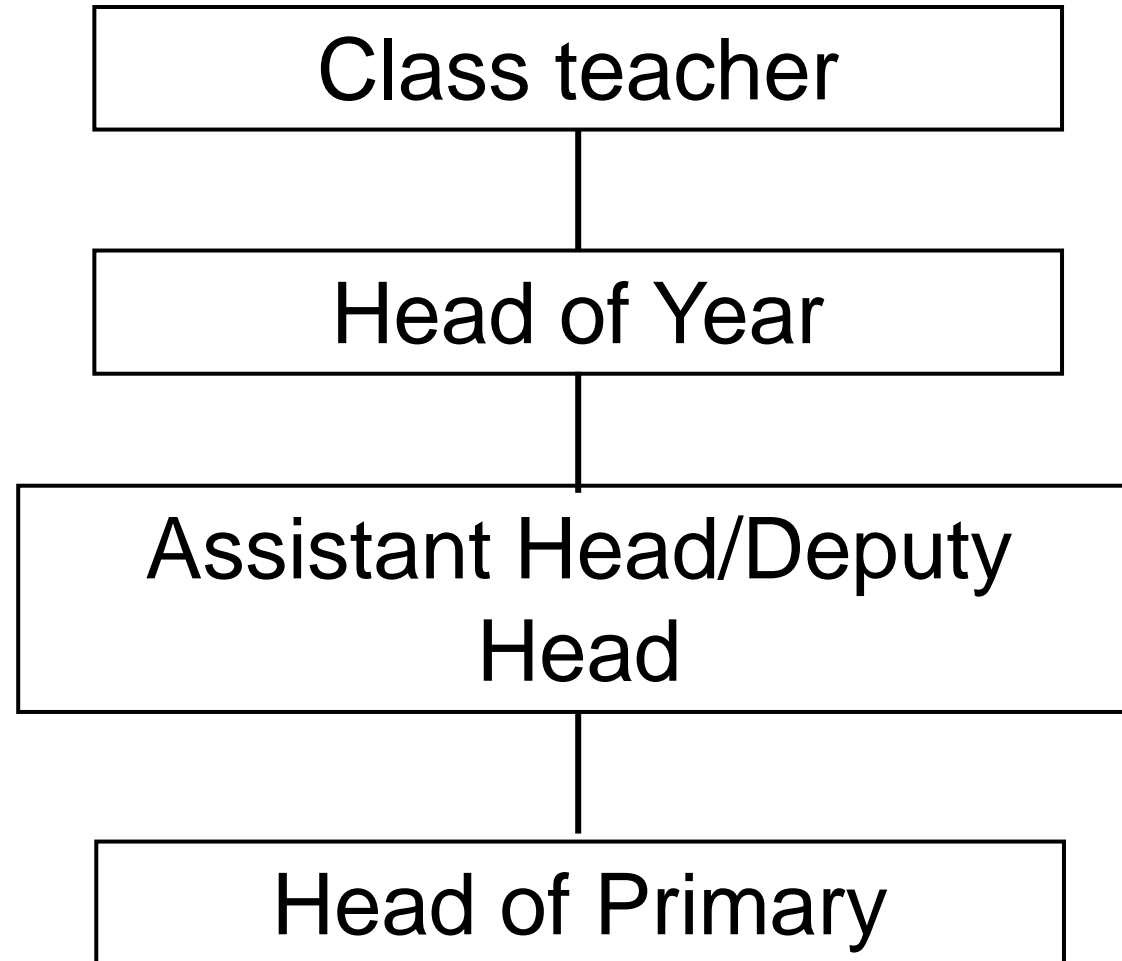
We do not give out telephone numbers and staff are not to engage in WhatsApp groups, this includes with the class reps. You can email teachers in the same way. Mrs Hilton is holding a meeting with class reps about these expectations.

Teachers respond within 48 hours. No emails will be sent on weekends or after 3pm.



Park House
English School

Communication



Park House
English School

Communication

Social media platforms at Park House:

Facebook

Twitter

Instagram

Our school website has information on everything school related.



Park House
English School

PHES Designated Safeguard Leads and Deputy Safeguard Leads

SAFEGUARDING AT PARK HOUSE



Park House
English School

WE ARE HERE TO HELP.
WE ARE HERE TO LISTEN.

Natasha Hilton
Head of Primary

Rebecca Saunders
Head of Secondary

The people in these pictures are here to help you. If you have a worry or concern about anything, be it about yourself, a friend or something at home, they are here to listen.

Anna Stuart
Primary Deputy Head

Claire Sharkey
EA to Principal

Caroline Awad
MoEHE Coordinator

Michael MacDonald
Secondary Assistant Head

Olivia Mason
Secondary Assistant Head

Kerry Walton
Secondary Assistant Head



Park House
English School

Any concerns please contact:
safeguarding@parkhouseschool.com



Park House
English School

Questions?