



Park House
English School

Sixth Form Prospectus



PERSEVERANCE
RESPONSIBILITY
iNDEPENDENCE
DEDICATION
ENGAGEMENT

Contents

| | | |
|----|--|------------------------------|
| 03 | A message from our Key Stage 5 Leaders | |
| 04 | Application Process | |
| 05 | FAQ's | |
| 07 | Messages from our Students | |
| 08 | Messages from our Alumni | |
| 09 | Examination Results | |
| 09 | Working with you | |
| 10 | Enrichment Opportunities | |
| 12 | Academic Support | |
| 13 | Applying to University | |
| 14 | Career Pathways | |
| 16 | A-Level Options at Park House | |
| 19 | Arabic | 29 Geography |
| 20 | Art | 30 History |
| 21 | Biology | 31 Mathematics |
| 22 | Business Studies | 32 Music |
| 23 | Chemistry | 33 Physical Education |
| 24 | Computer Science | 34 Physics |
| 25 | Economics | 35 Psychology |
| 26 | English Language | 36 Sociology |
| 27 | English Literature | 37 Spanish |
| 28 | French | 38 Appendices: Options Forms |



Assistant Head: Key Stage 5 Message

At Park House, our Sixth Form students receive an outstanding education, pastoral support and university and career guidance. We understand how important these final years of school can be which is why we have a dedicated team to support you every step of the way. Our tutors have expert knowledge about the application process to universities, they will write your references, help you with your shortlisting, and oversee your teacher recommendation letters. However, we know Sixth Form is not all about academics and tertiary education applications, which is why we also help you make memories. Whether it's through raising awareness of critical global issues, social events in our Common Room, or your end-of-year prom, we want your final years at Park House to be filled with joy and accomplishment.



Mrs Kerry Walton

Key Stage 5 Progress Leader Message

Sixth Form is a time of growth and development for our students, as they bridge the gap between high school and university. It is a time of opportunity, excitement and challenge as students display their independence in preparation for the continuation of their academic life. Students must learn to balance their studies with other commitments and we encourage our students to engage meaningfully with their studies, taking responsibility for their learning and their outcomes. We encourage all students to recognise their potential and strive to develop their talents.

Our curriculum aims to develop all of our students as a whole person, armed with the transferable skills and qualities to achieve their personal and career goals. Quality teaching and learning throughout the school, coupled with investment in our facilities, has led to growth in our sixth form, with over 160 students studying with us this year. We provide a flexible and personalised curriculum with high standards, high achievement and innovative learning together with a caring, family community that ensures students make the most of their time in sixth form here at Park House.

We have dedicated members of staff, and rigorous processes, to ensure that students are well prepared for university applications, and we carefully track the progress of our sixth form leavers, monitoring destinations and providing further support if required. The number of students gaining places at a Russell Group or Ivy League university increases year on year.

As part of our sixth form cohort, and as role models for our younger students, our sixth formers are expected to meet high standards behaviour and appearance, and set an example for others around the school. We constantly encourage our students to develop as young adults, ready be for the world beyond school. Our student service programme, as well as our expansive range extra-curricular activities, allows our students to contribute to the wider school community and develop valuable transferable skills sought after by universities and employers. The opportunity to be the best version of themselves is what we offer and the chance to truly explore their potential.



Mr Sam Corrigan

Why choose us?

Our priorities are:

- To encourage all of our students to achieve way beyond what they thought was possible
- To provide outstanding teaching and learning that's challenging, thought-provoking, informative, engaging, interesting and fun.
- To develop an appropriate, evolving and student-focused curriculum coupled with clear pathways.
- To encourage students to engage with enrichment opportunities to support their personal development.
- To guide students to make informed choices about their future.



The Application Process Grade Requirements

Candidates for the Sixth Form may be in Year 11 at Park House or attending other schools.

All candidates, both internal and external will need to meet the minimum entry requirements which are:

- At least a Grade 6 (Grade B) at IGCSE in the subjects to be studied in Year 12.
- A minimum of a Grade 4 (Grade C) pass at IGCSE in English Language and Mathematics, although a minimum of a Grade 6 (Grade B) is required if either subject is to be studied in Year 12.
- In total, a student must have achieved a minimum of four passes at a Grade 6 (Grade B) or above at IGCSE level and two passes at a Grade 4 (Grade C) or above at IGCSE level.



Internal Candidates

Park House students in Year 11 will be provided with a copy of the Sixth Form prospectus and an options form which they will need to return by the date specified. This will be followed by an interview. Provisional places will be made based on successful interview and achievement of prerequisite grades.

External Candidates

Applications for places in the Sixth Form will be considered after completion of an online application form and attending an interview. Satisfactory school reports from their previous school will be required. After interview, successful candidates will be offered a provisional place in the Sixth Form, subject to achieving the minimum entry requirements.



Frequently Asked Questions

When do I apply?

External applications open in November of each year and run through until registration in August/September. Students at Park House, are guided through the process and will have an interview with the Head of Sixth Form. Students new to Park House will be able to discuss their application and ask any questions about life in the Sixth Form. In the event of oversubscription, applicants will be placed on the waiting list.

How many subjects will I study?

Typically, students in Year 12 will study four subjects at AS-level and will then usually continue with three of these subjects to A-level in Year 13.

How big is the jump from GCSE?

By now, you have probably heard countless numbers of people tell you that the step-up from IGCSE to A-Level is absolutely huge, but do not let this deter you. Yes, there is indeed a jump, but it will be something that everyone will experience, so don't feel like you are the only person finding it tough. Remember, A-Levels aren't easy.

How much work will I get?

Each subject will be different, but as a rule of thumb, you should dedicate at least nine hours per fortnight to independent study in each of your subjects.

What are class sizes like?

Class sizes are usually smaller than at IGCSE, to allow teachers to give more of their time each lesson to each student. Class sizes may be around 20 but can be as low as 5 for some subjects and will vary from year to year. The small class sizes allow for extra support from your subject teachers.

Will my teachers treat me like a young adult?

Yes. The relationships between teachers and Sixth Form students are particularly strong at Park House and students receive excellent support and guidance from their subject staff. We still have high expectations of Sixth Form students, which include a requirement of excellent punctuality and attendance, and dedication to studies.



Frequently Asked Questions

How does the form class work in Sixth Form?

Each student in the Sixth form is allocated to a form group and the form tutor is the first point of contact for the students and their parents. All students are expected to be punctual to registration which is an important part of the day. Form tutors will monitor students' attendance and punctuality as well as their progress and general well-being in school. The form tutors write the references required for admission to universities so it is imperative that students attend and contribute to form time.

What opportunities are there outside of lessons?

Park House has an extensive extra-curricular activities programme and students are encouraged to take part in activities that are of interest to them. Through involvement in extra-curricular activities, students will learn and develop valuable transferable skills which universities look for in candidates. We also have super-curricular activities such as MUN, Drama, the Medical Club, and Robotics which will allow students the opportunity to develop their academic research and subject knowledge beyond the curriculum.

What are our A-Level results like?

Every year, consistently, our students receive top marks across various exams in the country, and we maintain outstanding success in most subject areas. Please see the results table under "Examination Results" on page 8 of the prospectus.

What is the uniform for Sixth Form students?

Our Sixth Form school uniform is designed to promote a positive and respectable image of both the Sixth Form and the school. It allows the Sixth Form students to be recognisable as the senior students in the school and ensures that everyone's appearance is smart.

For the girls, the uniform requirements are a white blouse with tailored black trousers (not tight fitting) or a black skirt to the knee (not tight fitting) and a black Park House cardigan. For boys, the uniform requirements are a white shirt, a tie and tailored black trousers (not tight fitting), and a black Park House jumper. Footwear for girls and boys are black leather (or synthetic leather) shoes. No canvas shoes or trainers are allowed.

If you still have questions or queries about life in the Sixth Form at Park House, please contact us via info@parkhouseschool.com and we'll get back to you as quickly as possible.



Messages from our students



Evinka
Head Student 2023

Being granted such an invaluable role has given me the privilege to return a favour to the school, as a small token of appreciation, for the substantial guidance and support I have received ever since stepping foot on Park House grounds back in 2018. I have grown a huge sense of admiration towards the togetherness and ever-growing community of Park House. The chance to be surrounded by such a diverse, welcoming and encouraging group of peers, staff and faculty is truly what has made my school experience a unique yet memorable one. Presenting countless opportunities to excel both academically and socially, alongside providing a consistent nurturing support system for all, Park House has been pivotal in steering me into the right direction whilst allowing me to express my creative side, and I'm eternally thankful for that. As a chapter comes to an end, despite the arduous obstacles one is bound to face as a student, my time in Park House will be a reminiscent of all the laughs, sweet memories, and strong connections formed here, those of which I shall cherish for a lifetime.



Derck
Head Student 2023

Being a student at Park House since Nursery, it has been my pleasure to grow up with the school. The opportunities, community and educational experience that Park House has offered me have set me up for a bright future. The world is your oyster when growing up with a dynamic and diverse student body. Building friendships and connections with such an international group of individuals are the basis for a prodigious education. Academic freedom and being able to pursue the prospects that your heart desires are liberating and stimulating. Having to leave the school that has given me so much saddens me, however knowing that it will continue to produce such rounded individuals gives me great pride.



Thiyaan
Deputy Head Student 2023

It is with extreme pride that I can say I have been a student of Park House my whole academic life. Ever since stepping foot in Nursery for the first time as a little 3-year-old boy, all the way until Year 13, growing up at Park House has provided me countless memories that I will cherish and relish for the rest of my life. Whether that be the nervousness of performing in my first assembly, playing in numerous school sports teams or even the lunchtime football matches, Park House has been with me every step of the way. Throughout my 15 years at Park House, I have been exposed to a multitude of foreign cultures, giving me the privilege of forming bonds with students and teachers from all walks of life. Most of which will stay with me, as I embark on the next chapter of my life. Leaving the school which I hold so dearly to my heart saddens me immensely however, it fills me with happiness knowing that there will be a fresh crop of young students, stepping into Nursery for the first time, just as I did, who will be privileged to make memories as a member of the Park House Family. I would like to say thank you with a heart filled with gratitude, to everyone who has contributed to my unforgettable experience at this amazing school and wish each of you the best of luck in your future endeavours.



Maryam
Deputy Head Student 2023

Having been a student at Park House during my adolescence, I've fostered a sense of gratitude towards the school for enabling me to come across such a diverse, intriguing, and humorous range of people who have made my time at the school worthwhile. Regardless of any personal or academic qualms that are inevitable in a student's life, my time in Park House will be spotlighted by the fond memories I have made with the people I encountered – whether that be in reference to certain teachers, or dear classmates. In addition, Park House largely contributed to my blossoming confidence and, through my membership in the early years of the debate club, the school aided me in "breaking out of my shell" and reaching for opportunities no matter how daunting they seem and for that, I remain eternally grateful.

Therefore, to the students, I implore you all to take advantage of the opportunities and choices granted to you in order for you to excel outside of the boundaries of a curriculum and not let arbitrary concepts such as embarrassment or fear hinder your potential. As Oscar Wilde once said, "To define is to limit."



Messages from our Alumni



Aiah - Alumna 2022

Park House has not only supplied me with a renowned academic experience but with the opportunity to test the limits of my creativity, responsibility and leadership skills. Navigating A-Level studies while holding the Head Student position was the most challenging task of my school experience, nonetheless an enjoyable and worthwhile one. Something I can ascribe to is the amazing support provided by this school; in terms of academic guidance and most recently, the addition of a well-being advisor has meant additional emotional support as well. At the end of my PHES journey, I gathered all the vital traits that will form the basis of my success in the future.



Flynn - Alumnus 2022

I first joined Park House in Year 12. The first thing I noticed was the strong sense of community within Sixth Form. This bond between students only grew by overcoming the numerous hurdles that A-levels threw at us: like a blacksmith tempering a blade. As a member of the Sixth Form, we are given the tools to pursue our futures. Each and every student has their own voice and is treated as an adult by the staff. With this comes the responsibility of acting as a role model for the younger years: the beacons of hope that illuminate the path to progress and prosperity for our future.



Daisy - Alumna 2021

Park House has been a massive part of my formative years; meeting people of all backgrounds, learning and refining the tools and skills necessary for my future, and supporting me on my way to university and later life. I would be lying if I were to say my experience was perfect, and that there were no challenges faced along the way, but it is those challenges that have made me appreciate my journey most of all. Looking back, I realise how important the connections and friendships you make throughout your school life are, and how they will shape you as a person. PHES allows us to meet people from different cultures and form unique relationships, which is an opportunity I think we are all lucky to have. My advice to current and future students would be to enjoy every minute of your school experience, from your form time, to break, to every lesson surrounded by your friends and classmates.



Hala - Alumna 2019

Having attended Park House from Nursery up until Sixth Form, I can confidently say that I have been provided with a plethora of support and opportunities that will equip me for university. Studying abroad has always been a dream of mine and Mrs Allen-Adekunle has been there for me every step of the way; advising me on what to do, checking over any essays and supporting me through any difficulties.

Sixth Form is definitely challenging but this is what will prepare us for university and other obstacles in life. Sixth Form instils independence in you and makes you realise that your education, your duties and your future is your responsibility. You must put in a lot more effort than you did for IGCSE but being in Sixth Form has also been rewarding; one of those being the common room which provides you with a comfortable place to catch up on your work, study or simply relax in between classes. Being surrounded by people going through a similar situation acts as a source of comfort as you share advice and support each other.



Sandev - Alumnus 2018

Unforgettable memories, academic freedom of choice, and new adventures: this is what my experience at Park House was like. This exposure has eased my transition to university life at Yale-NUS College in Singapore, where I am pursuing a degree in Economics.

The most important lesson I learnt at Park House is that you should take charge of your own future. Don't see a specific sport or afterschool club you're interested in? Go start it. Want to carry out in-depth research on topics you've covered in class? Go and find that opportunity.



Examination Results

We are very proud of our students who make excellent progress over their time in the Sixth Form, achieving results that reflect this. The results for our AS and A-level students for the years 2019 to 2023 were:

| AS STUDENT PERFORMANCE | | |
|------------------------|-------------|----|
| YEAR | % Pass Rate | %A |
| 2023 | 91 | 33 |
| 2022 | 98 | 41 |
| 2021 | 98 | 41 |
| 2020 | 93 | 30 |
| 2019 | 83 | 17 |

| A2 STUDENT PERFORMANCE | | |
|------------------------|-------------|---------|
| YEAR | % Pass Rate | %A* - A |
| 2023 | 100 | 50 |
| 2022 | 100 | 45 |
| 2021 | 98 | 46 |
| 2020 | 100 | 43 |
| 2019 | 97 | 23 |

Working with you

Being in the Sixth Form comes with extra freedom but also extra responsibilities. There is a delicate balance between the commitments of school work, extra-curricular activities, super-curricular activities, and a social life. Whilst involvement in extra-curricular and super-curricular activities is important and will certainly enhance a university application, achieving the grades required for entry to the university course is essential. Students will require the support of both teachers and their parents in order to achieve their potential.





Enrichment Opportunities

The sixth-form experience at Park House is not solely about developing your academic prowess. We pride ourselves on providing opportunities that allow our students to grow holistically and equip them with the necessary employability skills to ensure their success as they move to higher education and work. To this end, we offer them a range of enrichment and leadership opportunities, some of which are highlighted below. No prior experience is required for leadership positions. We simply ask that you have the passion to provide a service above self, a willingness to learn, and a readiness to role model our school's PRIDE ethos.

Head Students

The head students are the representatives of the student's voice. Alongside the deputies, they lead the student leadership team to work in collaboration with the school management to ensure the school's mission and vision are achieved and that students have a positive learning experience.

Prefect System

The prefect team consists of students across all key stages and is led by the Senior Prefect Leaders. Being a prefect is a great way to give back to the school, and also to get more out of it. As such, a prefect is highly motivated and ready to give up their time for the whole year, across a range of duties and responsibilities.

Social Committee

The purpose of the social committee is to actively engage and attract students to a series of social events held throughout the school year. Events and activities are designed to promote the building of long-lasting relationships and amazing memories, the members of the social committee are creative and passionate about bringing a social element into the sixth form experience.

Sports Leaders

Sports Leaders act as role models for the whole school, demonstrating a high level of leadership as well as promoting the importance of teamwork. They arrange regular sporting activities to encourage a healthy love of physical activity amongst the sixth form and support the physical education department in the hosting of sporting events.

PHES MUN

MUN is a structured debate club where delegates will play the role of ambassadors for any UN member country, from Somalia to the United States. Throughout the year the PHES MUN club trains delegates in the professional debate format that would be used at a real UN conference. The students are then given multiple opportunities in the form of interschool conferences to debate important, relevant topics in the world today.





Enrichment Opportunities

Duke of Edinburgh

The Duke of Edinburgh (DofE) programme allows students to receive an internationally recognised award by showing proficiency in four key areas of personal development: volunteering, physical, skills and expedition. Park House supports our DofE students through training workshops culminating in a Bronze or Silver Award expedition in Zekreet or Al Khor mangroves.

School service

The school work experience programme is a time when Year 12 and selected Year 13 students gain valuable work skills which should help them with future employment and support their university application. Students volunteer a minimum of 20 hours in a term by supporting younger students in accessing the curriculum, providing one-to-one mentorship, assisting in the library, interning in the administrative department, etc.

International Learning Opportunities

Being a part of The International Schools Partnership (ISP) means that our students have access to a broader international community, providing additional learning and cultural opportunities. Through the ISP International Learning Opportunities (ILOS), we are able to offer our Sixth Form students:

- A global Chess Tournament
- The Street Child United Charity Partnership

More information on each ILO can be found on our website: <https://parkhouseschool.com/international-learning-opportunities/>



Academic Support

All students will be assessed regularly in each of their subjects. We monitor the academic progress of sixth form students throughout terms one and two and record their grades according to their current achievement and effort in all of their subjects. These grades are shared with the students by their teachers and form tutors and recorded by the students for parents to review. If any student is failing to make adequate effort or is not achieving their potential, then targets for improvement will be set and agreed upon by the student with their form tutor. These will then be reviewed at the next tracking data collection. We have a support system for sixth form students, as laid down in our progress policy, which aims to identify any problems with progress and effort at the earliest possible time. Parents are kept informed as soon as any problems arise and are further informed when the issues have been resolved. Parents may be involved in discussions about the support and targets for improvement needed, as well as the review of these targets and progress made.

There will be formal reporting of the progress of students to parents at the end of term one, a mock examination grade report in term two and a full written report at the end of term two. This is to ensure that the students are prepared for their final examinations. There are Parents' Evenings in Term 1 and Term 2 where there will be an opportunity for parents to discuss their son's/daughter's progress with their subject teachers.



Applying to University

All students in the Sixth Form are issued with a University Handbook to prepare and guide them through the process of applying to university.

There is a wealth of information and guidance in this booklet for applications both in the UK and the USA. We recognise that many of our students will have other destinations in mind and we have the experience and knowledge within our Sixth Form team to help students with all university applications.

The Head of Sixth Form, Mrs Allen-Adekunle, will meet with all students in Year 13 to discuss their university plans. The Form Tutors will work with the students on their applications, reviewing university choices and the applications throughout each stage of the process. We aim to help each individual student to submit the best possible application.

We have support for university interviews with tips, possible questions, and activities within the University Handbook. We will conduct mock interviews with students, especially for those students applying for Medicine, Dentistry, Veterinary Medicine, or to Oxford and Cambridge Universities.

For Year 12 we have a University Preparation day which is held in the second term where we introduce the key aspects of their application, the process for different countries, preparation of important documents, entrance tests, deadlines, and most importantly how to select a suitable course and university.

Throughout the year, we also have numerous visits from university admission tutors from around the world.



Career Pathways

Once at university, you can choose to continue to study any subject you completed at A-Level. However, studying one of these subjects in combination with other A-Levels subjects opens up a range of potential degree courses for you. There is a vast number of courses available at university; some you will have heard of, but others you may not have. The following lists, whilst not exhaustive, shows some of the university courses and/or careers you could follow for each of the A-level subjects we offer.

| | | | |
|---|---|--|--|
| Art History of Art Architecture 3 D Design Film & TV Production Jewellery Photography Interior Design Fashion Journalism Museum Studies Art Conservation Graphic Design Digital Media | Biology Environmental Science Marine Biology Sport Sciences Nursing Physiotherapy Botany Agriculture Dentistry Microbiology Bioinformatics Equine Science Genetics Land Management Palaeobiology Zoology Anthropology Psychology | Business Banking & Finance Business Economics Business Law Marketing Hospitality & Event Management Financial Services HR Management Public Relations Logistics Retail & Leisure Management Business & Maths Accountancy with Management Business with Geography | Chemistry Pharmacy Materials Science Chemical Engineering Agriculture Sport & Exercise Science Optometry Medicine Nursing Food Science Chemistry & Nanotechnology Biochemistry Law Toxicology Forensic Science |
| Economics Banking & Finance Law Economist Financial risk analyst Data analyst Accountant Economic researcher Financial consultant Investment analyst International relations Social research and taxation Actuarial Studies | English Advertising American Studies Broadcast Media & Media Writing Drama Theatre Studies Creative Writing Journalism Law Marketing Teaching Politics Social Sciences Film Studies Psychology | Geography Adventure Tourism Applied Geology Archaeology Business with Geography Climate Change Economics Geography and Transport Planning Housing Studies Landscape Design Oceanography Physical Geography Sustainable Development Events Management | History American Studies Ancient History Archaeology Classical Civilization History of Art History of Ideas and Philosophy Journalism Law Modern Greek Studies Politics Museum and Gallery Studies Architecture Philosophy, Politics and Economics (PPE) |



Career Pathways

| | | | |
|---|--|---|--|
| ICT Business Information Technology Computer Engineering Accountancy Information Management Librarianship Web Management Computer Animation Artificial Intelligence | Languages International Relations Accountancy & Finance with European Studies Classics – Greek and Latin European Languages European Studies Linguistics Mechanical Engineering & French Russian or Japanese Journalism Business and Language Hospitality Law Translator Diplomatic services | Mathematics Accountancy Actuarial Studies Applied Statistics Architecture Artificial Intelligence Astronomy Computer Science Electronics Investment Analysis Informatics Mechanical Engineering Operational Research Surveying Medicine Economics | Music Composing Audio engineering Sound operations Artist management Community arts music Conducting Teaching Music publishing Promotions management Musical instrument technology Music production Music therapy |
| Physical Education Science Leisure Management Occupational Therapy Physiotherapy Sports Rehabilitation Leisure Management Sports Coaching Sport Science Sport & Maths Psychology & Sport Science English & Sport Science Biosciences Sport & Exercise Science | Physics Mechanical Engineering Acoustics Aerospace Manufacturing Civil Engineering Optometry Meteorology Astrophysics Radiology Computer Science Sustainable Technology Business & Physics Philosophy Sport Materials Science | Psychology Animal Behaviour Experimental Psychology Philosophy Human Rights Politics Criminology Nursing Childhood, Youth & Education Studies Anthropology Law Business & Psychology Social Sciences Marketing | Sociology Sociology & European Culture Philosophy Human Rights & Politics Criminology Anthropology Social Work Public Policy & Administration |

Further information on each of the A-level subjects we offer can be found on subsequent pages within this prospectus.



A-Level Options at Park House



Year 12 Options

The following pages provide an overview of each subject Park House provides. Each chosen subject needs to be selected from a different option block. If you would like to study a combination of subjects that does not match the options provided then you need to speak to one of Key Stage 5 Leaders.

NOTE:

It is a Ministry of Education and Higher Education requirement that Arabic passport holders must study Arabic, and Muslim students must study Islamic Studies. The option forms have been designed so that students who must study Arabic and/or Islamic, still have the option of studying 4 AS-level subjects in Year 12. The option form received will be based on the student's passport and whether they are Muslim.

- **Muslim, Arabic speakers** must take Arabic and Islamic Studies. They can also choose 3 to 4 AS-level subjects from blocks A to D. (4 AS subjects + Arabic, is only advisable for those students with exceptional IGCSE results)
- **Muslim, Non-Arabic speakers** must take Islamic and can choose up to 4 further subjects from blocks A to D.
- **Non-Muslim Arabic speakers** must take Arabic and then can choose 3 or 4 subjects from blocks A to D.
- **Non-Muslim and non-Arabic speakers** are not required to study Arabic or Islamic. They can choose 4 subjects from blocks A to D, and the EPQ in Block E, if they wish.

Students who must study Islamic Studies are not able to study an EPQ due to the lessons taking place at the same time.

PLEASE REFER TO THE APPENDICES FOR THE OPTION BLOCKS AND FORMS.

In addition to the chosen subjects, students will also have regular PSHE (Personal, Social and Health Education) lessons during their form time.

If you would like to discuss any of the information in this booklet further, please contact us using the details below:

General Enquiries: info@parkhouseschool.com

Key Stage 5 Progress Leader: Mr Sam Corrigan – sam.corrigan@parkhouseschool.com

Assistant Head: Key Stage 5: Mrs Kerry Walton – kerry.walton@parkhouseschool.com



Year 12 Options

What is the EPQ?

The Extended Project Qualification (EPQ) is a qualification equivalent to an AS-level subject. Students who choose to study the EPQ will do so for 18 months, and so they will need to continue into Year 13 if they wish to take this extra subject. The EPQ is essentially a university dissertation, whereby students will write a 4000-word essay on the topic they wish to explore. Previous essay titles have included:

- Should CCTV be banned?
- Can psychopaths have meaningful relationships?
- Is medical consent ever really understood?

Students who choose to study the EPQ will attend tutorials for the first part of the course, usually for around 12 weeks. In these sessions, they will learn how to research, how to form a critical argument, and how to structure their essays. They are then allocated an academic mentor, who will meet with them weekly to discuss the progress of their EPQ. The EPQ is submitted in January of Year 13 and marked externally by the examination board, Edexcel.

The EPQ is an excellent addition to any university application. The skills and characteristics of an EPQ student include:

- Excellent time-management skills
- Organisation and planning skills
- Perseverance and problem-solving skills
- A passion for a topic they are curious to seek more information about

Students who lack passion or a proactive attitude may struggle with the demands of the EPQ since it is self-driven purely by the student. The EPQ qualification is equivalent to 1 AS-level subject and is highly recognised and regarded by universities around the world.



AS/A-Level Arabic

| Examination Board | Edexcel |
|-------------------|---|
| Syllabus | AS-Level Arabic XAA01 A-Level Arabic YAA01 |

Entry Requirements

- A minimum of Grade 6 in IGCSE Arabic.

Benefits and Potential Pathways of studying Arabic

In recent years, higher education institutions and employers have consistently flagged the need for students to develop a range of transferable skills to enable them to respond with confidence to the demands of undergraduate study and the world of work

Studying Arabic will enable students to develop essential transferable skills such as decision-making and reasoning, active listening, oral communication, written communication, analysing, synthesising, and reasoning skills. Learning a language develops critical thinking skills and cultural awareness and opens up job opportunities in the world of business.

For further information regarding the subject, please click on the following link: <https://bit.ly/3KtAWN2>



AS/A-Level Art

| Examination Board | Edexcel |
|-------------------|---|
| Syllabus | AS-Level Art 8AD01 - 8CC01 A-Level Art 9AD01 - 9CC01 |

Entry Requirements

- A minimum of a Grade 6 in IGCSE Art.
- It is essential that students have a high degree of self-motivation, self-management and excellent time-management skills.

Benefits and Potential Pathways of studying Art

An education in the arts is based on the belief that although we are teaching artistic conventions, rules, and theories, we are also teaching the freedom to create, experiment, eradicate boundaries of possibility and foster an environment where success is determined by a willingness to fail.

While you might have heard that becoming an architect, fine artist, sculptor or gallery assistant is an option for those who study Art or Design, there are many other careers available for those who are able to envision, design, and create beautiful things.

No matter what industry or how many industries a person enters in their lifetime, there are a certain collection of skills that are directly transferable to each and every job role. Those skills are at the core of what we teach in creative arts. Confidence, improvisation, collaboration, compromise, integrity, vision, imagination, and open-mindedness. The list goes on.

For further information regarding the subject, please click on the following link: <https://bit.ly/3Jv9zkm>



AS/A-Level Biology

| Examination Board | Edexcel |
|-------------------|---|
| Syllabus | AS-Level Biology XBI11 A-Level Biology YBI11 |

Entry Requirements

- A minimum of a Grade 6 in IGCSE Biology
- A minimum of a Grade 6 average in IGCSE Double Science

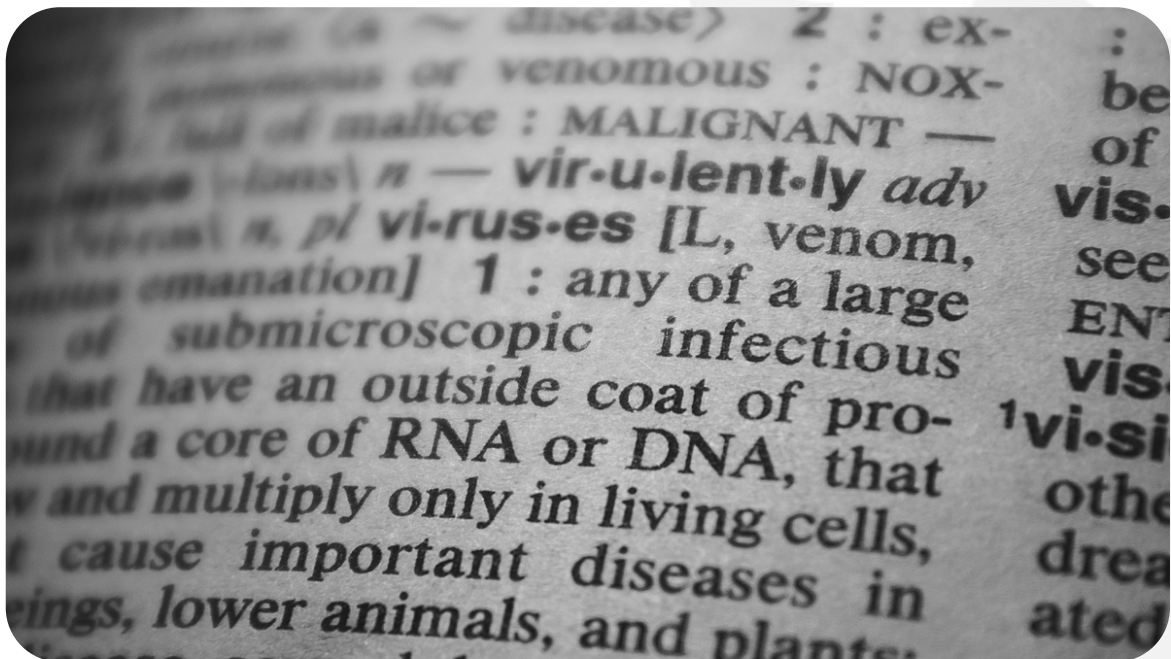
Benefits and Potential of studying Biology

Biology involves the study of a wide range of exciting topics, ranging from molecular biology to the study of ecosystems, and from microorganisms to mammoths. Biology is never far from the headlines either as it is the most rapidly developing science.

The human genome has been sequenced and we know the complete arrangement of the three thousand million bases that make up human DNA. In South-East Asia the skies are dark with smoke as the last Bornean rainforests are burned to grow oil palms. Biologists are concerned with all of these issues. They work in the fields of cell biology, medicine, food production, and ecology and the work they do is vital to us all.

Biology is a great choice of subject for people who want a career in health and clinical professions.

For further information regarding the subject, please click on the following link: <https://bit.ly/3KoDBYd>



AS/A-Level Business Studies

| Examination Board | Edexcel |
|-------------------|---|
| Syllabus | AS-Level Business Studies XBS11 A-Level Business Studies YBS11 |

Entry Requirements

There is no requirement to have studied Business Studies at IGCSE, however, this would be an advantage.

Benefits and Potential Pathways of studying Business Studies

The study of AS-Level Business Studies will allow you to take the first step towards a career in private or public organisations, or progress with confidence to a degree in business and management-related subjects. All businesses (and other organisations like charities and hospitals) need sound business skills behind them to be successful. Students who take Business Studies often also study Computer Science, Economics, Modern Languages, or Maths, but students committed to the arts or science should also consider taking Business Studies in this cost-centred world.

For further information regarding the subject, please click on the following link: <https://bit.ly/3jo5le3>



AS/A-Level Chemistry

| Examination Board | Edexcel |
|-------------------|--|
| Syllabus | AS-Level Chemistry CH01 A-Level Chemistry YCH01 |

Entry Requirements

- A minimum of a Grade 6 in IGCSE Chemistry
- A minimum of a Grade 6 average in IGCSE Double Science

Benefits and Potential Pathways of studying Chemistry

Realise it or not, deep down we are all chemists. Every time that we light a match, boil an egg, or simply breathe in and out, we perform a chemical reaction. Our bodies grow, develop and function entirely as a result of the chemical processes that go on within them. Our clothes and nearly all the objects of our everyday life are manufactured by the chemical transformation of raw materials like oil or iron ore, or by the chemical treatment of natural products like wood or wool.

Most of the food we eat is grown with the help of chemical fertilisers and kept from rotting with chemical preservatives. If we are to protect the planet from the harmful effects of human activity, we need to understand as clearly as possible the complex chemical systems which make up our environment of land, sea and air. As well as being fundamental in our daily lives, chemistry is a fundamental subject in science. In different areas, it overlaps with biology and medicine, physics and engineering, and geology and earth science.

For further information regarding the subject, please click on the following link: <https://bit.ly/38HLr1a>



AS/A-Level Computer Science

| | |
|-------------------|---|
| Examination Board | Cambridge Assessment International Education (CAIE) |
| Syllabus | AS & A-Level Computer Science 9608 |

Entry Requirements

- Recommended a minimum of a Grade B (level 6) in IGCSE Computer Science
- Nevertheless, IGCSE Computer Science is not essential. A solid understanding of Mathematics and ICT taught in IGCSE is beneficial. The most important is an enjoyment of the subject and a desire to solve problems.

Benefits and Potential Pathways of studying Computer Science

Computer Science students very often go on to study computer science at university. However, such a degree can take many forms, from pure computer science through degrees more focused on system architecture, all the way to those whose prime function is designing and implementing computer games. All industries use computer science to some extent, from the obvious ones like software and hardware companies (Google, Apple, Microsoft, HP, Samsung) to companies providing I.T. services (Youtube, Amazon, eBay, Snap, Twitter) and those that need and use computers to perform their everyday tasks.

There are thousands of jobs in I.T. requiring a range of skillsets and paying a range of salaries. Some of the more typical computer science jobs are application analyst, business analyst, data analyst, database administrator, games developer, information systems manager, I.T. consultant, multimedia programmer, SEO specialist, systems analyst, systems developer, UX analyst, web designer, and web developer.

For further information regarding the subject, please click on the following link: <https://bit.ly/3xvY35V>



AS/A-Level Economics

| Examination Board | Edexcel |
|-------------------|---|
| Syllabus | AS-Level Economics XEC11 A-Level Economics YEC11 |

Entry Requirements

No prior experience of the subject is required or assumed, though having a minimum of Grade 6 at IGCSE in either Economics or Business Studies is an advantage. Good ability in English (for essay writing) and Maths (simple calculations) is also a distinct advantage.

Benefits and Potential Pathways of studying Economics

In his presidential campaign, Bill Clinton kept a sign on his desk reading "It's the Economy, Stupid!" as a reminder that the most important questions in the modern political arena are related to the performance and management of the economy. If we wish to participate in shaping the world in the future, an understanding of how the economy functions is vital.

The Economics A-level is highly regarded by universities vetting applications. It uses a combination of written arguments and expositions, mathematical calculations and modelling, and logical, scientific reasoning. As such, Economics A-level opens up access to many degrees, not simply those related to Economics, Business, Management and Accounting.

For further information regarding the subject, please click on the following link: <https://bit.ly/3wCVwFZ>



AS/A-Level English Language

Examination Board

Edexcel

Syllabus

AS-Level English Language XEN01

A-Level English Language YEN01

Entry Requirements

- A minimum of Grade 6 in IGCSE English Language
- An enjoyment of reading a wide variety of texts

Benefits and Potential Pathways of studying English Language

Due to its academic rigour, English Language is seen as a valued subject, which prepares young people for some of the most academically demanding courses in the world. Successful English Language learners develop an understanding and enjoyment of a wide variety of different texts, both written and spoken.

For further information regarding the subject, please click on the following link: <https://bit.ly/3HiSIlt>



مدرسة المنتزة الانجليزية
PARK HOUSE ENGLISH SCHOOL

AS/A-Level English Literature

| | |
|-------------------|---|
| Examination Board | Edexcel |
| Syllabus | AS-Level English Literature XET01 A-Level English Literature YET01 |

Entry Requirements

All students must have a Grade 6 or above in IGCSE English Literature. They should also enjoy reading a wide variety of literature.

Benefits and Potential Pathways of studying English Literature

English Literature has been defined as a facilitating subject by the Russell Group (the most elite universities in the United Kingdom). Due to its academic rigour, English Literature is seen as a valued subject, which prepares young people for some of the most academically demanding courses in the world.

For further information regarding the subject, please click on the following link: <https://bit.ly/3jh5ZTR>



AS/A-Level French

| Examination Board | Edexcel |
|-------------------|---|
| Syllabus | AS-Level French XFR01 A-Level French YFR01 |

Entry Requirements

- A minimum of a Grade 6 in IGCSE French.
- Students should be committed to exploring the literature and culture of France in the French language.

Benefits and Potential Pathways of studying French

Speaking one language is not enough. Students who speak several languages will increase their chances of finding a job, whether at home or abroad.

- Learning another language enriches the mind and opens up new horizons, both personal and professional.
- The ability to speak both French and English is an advantage for finding a job with the many multinational companies using French as their working language, in many industries.
- French is both a working language and an official language of the United Nations, the European Union, UNESCO, NATO, the International Olympic Committee, the International Red Cross and international courts. Proficiency in French is essential for anyone considering a career in any international organisation.
- French is an analytical language that structures thought and develops critical thinking. In learning French, students also learn how to argue a case and present different points of view, valuable skills for discussions and negotiations.
- Speaking French makes a major contribution to preserving linguistic diversity in the world and avoiding the exclusive domination of a single language in today's globalised world.
- The A-Level course forms a sound basis for studying French in higher education and many students continue with it either as a single subject degree or in combination with another subject such as European Studies, Business Studies, Marketing, Law, Politics and History. Some French graduates use their language skills as translators, interpreters or teachers. Others embark on careers in areas ranging from banking to tourism.

For further information regarding the subject, please click on the following link: <https://bit.ly/3rvy5vo>



AS/A-Level Geography

| Examination Board | Edexcel |
|-------------------|---|
| Syllabus | AS-Level Geography XGE01 A-Level Geography YGE01 |

Entry Requirements

- A minimum of a Grade 6 in IGCSE Geography is normally expected. Students with a Grade 5 and/or those who did not study IGCSE Geography will be considered on an individual basis
- It is essential that students have a genuine interest in and a passion for geography as well as a willingness to work hard and to read/research the subject independently

Benefits and Potential Pathways of studying Geography

Geography occupies a central position in understanding and interpreting issues affecting people, places and environments, and change in both space and time.

- Students will gain a detailed appreciation for and understanding of the concept of sustainability and sustainable development, perhaps one of the most important 21st-century issues facing us all today and in the future.
- AS and A-Level geography helps pupils develop the knowledge and skills that will prepare them for successful university study; core and transferable skills, which are highly sought after by universities and employers.
- Geography keeps options open and is useful for and relevant to a variety of university courses and future career choices, including Geosciences, Marine Science, Oceanography, Environmental Engineering, Climatology, Meteorology, Natural Disaster Management, Landscape Architecture, Hydrology, Hydrographic Surveyor, Volcanology, Geology, Agricultural Engineering, Agronomy, Environmental Lawyer, Sustainable Development, Demography, Industrial Cost-Benefit Analysis, Urban Planning, Cartography, GIS Analyst, Writer / Researcher / Journalist, Diplomatic Services, United Nations, Teaching / Lecturing, Environmental Health and Safety, Conservation, Civil Engineering, and many more!

For further information regarding the subject, please click on the following link: <https://bit.ly/40d8Hug>



AS/A-Level History

| Examination Board | Edexcel |
|-------------------|---|
| Syllabus | AS-Level History XHI01 A-Level History YHI01 |

Entry Requirements

- A minimum of a Grade 6 in IGCSE History
- If students have not studied history IGCSE, they should have gained a minimum of a Grade 6 in IGCSE English first language or IGCSE English literature.

Benefits and Potential Pathways of studying History

History is a highly respected, traditional subject. As a facilitating subject, it is valued by both universities and employers. History is a highly regarded arts qualification. Many of our students go on to study it at university. Teaching and postgraduate research are obvious career options. In addition, many historians go on to train for professions such as law or accountancy.

For further information regarding the subject, please click on the following link: <https://bit.ly/3WR5VYt>



AS/A-Level Mathematics

| Examination Board | Edexcel |
|-------------------|---|
| Syllabus | AS-Level Mathematics XMA01 A-Level Mathematics YMA01 |

Entry Requirements

- A minimum of a Grade 7 in IGCSE or GCSE

Benefits and Potential Pathways of studying Mathematics

The course provides the students with essential skills which are necessary for further study in Mathematics or related subjects such as Engineering, Physics and Economics.

For further information regarding the subject, please click on the following link: <https://bit.ly/3M5cule>



A-Level Music

| Examination Board | Edexcel |
|-------------------|---------------------|
| Syllabus | A-Level Music 9MU01 |

Entry Requirements

- A minimum of a Grade 6 in GCSE Music

Benefits and Potential Pathways of studying Music

To study A-level Music, you need to be competent in at least one instrument (voice counts as a main instrument) because during the course, you will learn about composing, appraising and performing. Music is a subject that shows academic competency and creative prowess, and students often enter some of the top universities in the world to study a variety of degrees. Career pathways include composers, anthropologists, film and television project managers or producers. The skills you gain from A-level Music are more transferable than you think!

For further information regarding the subject, please click on the following link: <https://bit.ly/3kP4AnR>



AS/A-Level Physical Education

| | |
|-------------------|---|
| Examination Board | Cambridge Assessment International Education (CAIE) |
| Syllabus | Physical Education (9396) |

Entry Requirements

A minimum of a Grade B (6) in IGCSE Physical Education.

Benefits and Potential Pathways of studying Physical Education

The benefits of learning physical education are endless. Work-based skills like teamwork, cooperation, communication, understanding, empathy, vision, drive, and adaptability are the very foundation of this subject.

Studying A-level physical education is useful for and relevant to a variety of university degrees such as sports management, sports psychology, sports science, teaching, nutrition, and biochemistry. You may choose to gain an understanding of physical education in schools and wider communities, developing your teaching, learning, and leadership skills. You could also choose a career that researches the effects of diverse climatic conditions on physical performance during exercise, or perhaps choose a career in Recreation Management, where you will focus on gaining the skills and knowledge needed to create and deliver recreation and fitness programs in a variety of settings. The possibilities are endless.

For further information regarding the subject, please click on the following link: <https://bit.ly/3RMpPnb>



AS/A-Level Physics

| Examination Board | Edexcel |
|-------------------|---|
| Syllabus | AS-Level Physics XPH01 A-Level Physics YPH01 |

Entry Requirements

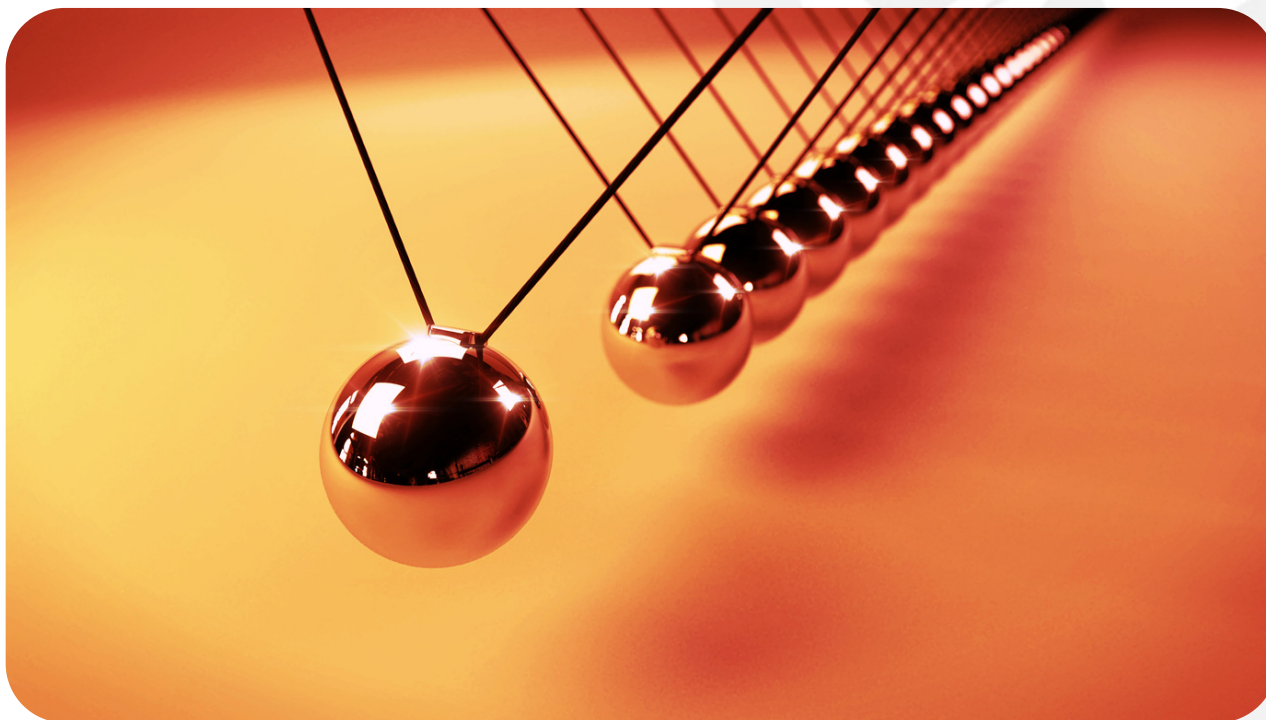
- A minimum of a Grade 6 in IGCSE Physics
- A minimum of a Grade 6 average in IGCSE Double Science

Benefits and Potential Pathways of studying Physics

The goal of physics is to understand how things work from first principles. Studying physics strengthens quantitative reasoning and problem-solving skills that are valuable in areas beyond physics itself.

Students who study physics are prepared to work on forefront ideas in science and technology, in academia, the government, or the private sector. Careers might focus on basic research in astrophysics, cosmology, particle physics, atomic physics, or in more applied research in areas such as renewable energy or medical physics. Careers could also include teaching, medicine, law or management in technical fields. Studying physics is great preparation for almost any career because students will learn how to analyse complex problems and develop a strong quantitative background that can be applied in any technical field.

For further information regarding the subject, please click on the following link: <https://bit.ly/3Eju5mW>



AS-Level Psychology

| | |
|-------------------|---|
| Examination Board | Cambridge Assessment International Education (CAIE) |
| Syllabus | AS-Level Psychology 9990 |

Entry Requirements

Candidates for Psychology at this level would be advantaged by having English IGCSE at Grade 6 or above. Every application will be looked at on its own merit. Expect a great deal of personal reading and independent study.

Benefits and Potential Pathways of studying Psychology

Cambridge International A-Level Psychology provides a suitable foundation for the study of Psychology or related courses in higher education. Equally, it is suitable for learners intending to pursue careers or further study in social sciences, or as part of a course of general education. This is an international course and may cover some controversial or sensitive topics. If you have any queries, please do not hesitate to have a conversation with the Lead Teacher or review the textbook prior to submitting options.

For further information regarding the subject, please click on the following link: <https://bit.ly/3Mchxgq>



AS/A-Level Sociology

| | |
|--------------------------|--|
| Examination Board | Cambridge Assessment International Education (CAIE) |
| Syllabus | AS/A-Level Sociology 9699 |

Entry Requirements

Candidates for Sociology at this level would be advantaged by having studied the subject at IGCSE level, however, this is not essential and every application will be looked at on its own merit. Expect a great deal of personal reading.

Benefits and Potential Pathways of studying Sociology

Students will learn the fundamentals of the subjects and develop skills valued by higher education and employers, including critical analysis, independent thinking and research. By considering a wide range of issues in contemporary society, students will develop the ability to construct and criticise arguments from a range of ideological perspectives.

Sociology is a rigorous academic subject that is widely respected by higher education institutions across the world. Previous students have gone on to study in areas such as Law, Journalism, Forensic Science, Educational Studies, Criminology, Sports Science, Business, Politics, International Relations and Theology.

For further information regarding the subject, please click on the following link: <https://bit.ly/3ObfH4R>



AS/A-Level Spanish

Examination Board

Edexcel

Syllabus

AS-Level Spanish XSP01
A-Level Spanish YSP01

Entry Requirements

- A minimum of a Grade 6 in IGCSE Spanish.
- Students should be committed to exploring the literature and culture of Spain in the Spanish language.

Benefits and Potential Pathways of studying Spanish

Speaking one language is not enough. Students who speak several languages will increase their chances of finding a job, whether at home or abroad.

- Learning another language opens up new horizons, both personal and professional.
- The ability to speak both Spanish and English is an advantage for finding a job with the many multinational companies using Spanish as their working language, in many industries.
- You will enrich your mind by learning about and gaining an appreciation of the rich Hispanic culture.
- There are almost 500 million Spanish speakers in the world and Spanish is the official or national language for over 20 different countries. Spanish is one of the six official languages of the United Nations and is the third most-used language in the media. Speaking Spanish makes a major contribution to preserving linguistic diversity in the world and avoiding the exclusive domination of a single language in today's globalised world.
- Spanish is an analytical language that structures thought and develops critical thinking. In learning Spanish, students also learn how to argue a case and present different points of view which are valuable skills for discussions and negotiations.
- The A-Level course forms a sound basis for studying Spanish in higher education and many students continue with it either as a single subject degree or in combination with another subject such as European Studies, Business Studies, Marketing, Law, Politics, History, etc. Some Spanish graduates use their language skills as translators, interpreters or teachers. Others embark on careers in areas ranging from banking to tourism.

For further information regarding the subject, please click on the following link: <https://bit.ly/3OeNTfV>



Appendix A: Options Form A 2024-2025

Key Stage 5 Options Form 2024-2025

| | |
|--------------------------------------|---|
| Student full name: | |
| Student form group: | |
| Intention for school year 2024-2025: | ___ Continuing at PHES ___ Leaving PHES ___ Undecided |

Options Form A: For students taking Arabic and Islamic Studies

Choose **three** options below from Blocks A to D. Your choices must be from different blocks.

| Block A | Tick one only | Block B | Tick one only | Block C | Tick one only | Block D | Tick one only |
|--------------------|---------------|-------------|---------------|-----------|---------------|-------------|---------------|
| Biology | | Business | | Art | | Biology | |
| Chemistry | | Chemistry | | Biology | | Economics | |
| English Language | | French | | Business | | Mathematics | |
| English Literature | | History | | Chemistry | | Music | |
| Mathematics | | Mathematics | | Computing | | Physics | |
| PE | | Physics | | Geography | | Sociology | |
| Further Maths | | Psychology | | | | | |

By signing below, I understand that the following are needed to meet minimum entry requirements to PHES Sixth Form:

- At least a Grade 6 (Grade B) at IGCSE in the subjects to be studied in Year 12
- A minimum of a Grade 4 (Grade C) pass at IGCSE in English Language and Mathematics, although a minimum of a Grade 6 (Grade B) is required if either subject is to be studied in Year 12
- In total, a student must have achieved a minimum of four passes at a Grade 6 (Grade B) or above at IGCSE level and two passes at a Grade 4 (Grade C) or above at IGCSE level

Provisional places will be made based on a successful interview and achievement of prerequisite grades.

| | | | |
|--------------------|--|-------------------|--|
| Student Signature: | | Parent Signature: | |
| Date: | | Date: | |



Appendix B: Options Form B 2024-2025

Key Stage 5 Options Form 2024-2025

| | |
|--------------------------------------|---|
| Student full name: | |
| Student form group: | |
| Intention for school year 2024-2025: | ___ Continuing at PHES ___ Leaving PHES ___ Undecided |

Options Form B: For students taking Arabic (without Islamic Studies)

Choose **three** options below from Blocks A to D. Your choices must be from different blocks. You may choose Extended Project Qualification from the Enrichment block on top of your **three** options.

| Block A | Tick one only | Block B | Tick one only | Block C | Tick one only | Block D | Tick one only | Enrichment | |
|--------------------|---------------|-------------|---------------|-----------|---------------|-------------|---------------|--------------------------------|--|
| Biology | | Business | | Art | | Biology | | Extended Project Qualification | |
| Chemistry | | Chemistry | | Biology | | Economics | | | |
| English Language | | French | | Business | | Mathematics | | | |
| English Literature | | History | | Chemistry | | Music | | | |
| Mathematics | | Mathematics | | Computing | | Physics | | | |
| PE | | Physics | | Geography | | Sociology | | | |
| Further Maths | | Psychology | | | | | | | |

By signing below, I understand that the following are needed to meet minimum entry requirements to PHES Sixth Form:

- At least a Grade 6 (Grade B) at IGCSE in the subjects to be studied in Year 12
- A minimum of a Grade 4 (Grade C) pass at IGCSE in English Language and Mathematics, although a minimum of a Grade 6 (Grade B) is required if either subject is to be studied in Year 12
- In total, a student must have achieved a minimum of four passes at a Grade 6 (Grade B) or above at IGCSE level and two passes at a Grade 4 (Grade C) or above at IGCSE level

Provisional places will be made based on a successful interview and achievement of prerequisite grades.

| | | | |
|--------------------|--|-------------------|--|
| Student Signature: | | Parent Signature: | |
| Date: | | Date: | |



Appendix C: Options Form C 2024-2025

Key Stage 5 Options Form 2024-2025

| | |
|--------------------------------------|---|
| Student full name: | |
| Student form group: | |
| Intention for school year 2024-2025: | ___ Continuing at PHES ___ Leaving PHES ___ Undecided |

Options Form C: For students taking Islamic Studies (without Arabic)

Choose **four** options below from Blocks A to D. Your choices must be from different blocks.

| Block A | Tick one only | Block B | Tick one only | Block C | Tick one only | Block D | Tick one only |
|--------------------|---------------|-------------|---------------|-----------|---------------|-------------|---------------|
| Biology | | Business | | Art | | Biology | |
| Chemistry | | Chemistry | | Biology | | Economics | |
| English Language | | French | | Business | | Mathematics | |
| English Literature | | History | | Chemistry | | Music | |
| Mathematics | | Mathematics | | Computing | | Physics | |
| PE | | Physics | | Geography | | Sociology | |
| Further Maths | | Psychology | | | | | |

By signing below, I understand that the following are needed to meet minimum entry requirements to PHES Sixth Form:

- At least a Grade 6 (Grade B) at IGCSE in the subjects to be studied in Year 12
- A minimum of a Grade 4 (Grade C) pass at IGCSE in English Language and Mathematics, although a minimum of a Grade 6 (Grade B) is required if either subject is to be studied in Year 12
- In total, a student must have achieved a minimum of four passes at a Grade 6 (Grade B) or above at IGCSE level and two passes at a Grade 4 (Grade C) or above at IGCSE level

Provisional places will be made based on a successful interview and achievement of prerequisite grades.

| | | | |
|--------------------|--|-------------------|--|
| Student Signature: | | Parent Signature: | |
| Date: | | Date: | |



Appendix D: Options Form D 2024-2025

Key Stage 5 Options Form 2024-2025

| | |
|--------------------------------------|---|
| Student full name: | |
| Student form group: | |
| Intention for school year 2024-2025: | ___ Continuing at PHES ___ Leaving PHES ___ Undecided |

Options Form D

Choose **four** options below from Blocks A to D. Your choices must be from different blocks. You may choose Extended Project Qualification from the Enrichment block on top of your **four** options.

| Block A | Tick one only | Block B | Tick one only | Block C | Tick one only | Block D | Tick one only | Enrichment | |
|--------------------|---------------|-------------|---------------|-----------|---------------|-------------|---------------|--------------------------------|--|
| Biology | | Business | | Art | | Biology | | Extended Project Qualification | |
| Chemistry | | Chemistry | | Biology | | Economics | | | |
| English Language | | French | | Business | | Mathematics | | | |
| English Literature | | History | | Chemistry | | Music | | | |
| Mathematics | | Mathematics | | Computing | | Physics | | | |
| PE | | Physics | | Geography | | Sociology | | | |
| Further Maths | | Psychology | | | | | | | |

By signing below, I understand that the following are needed to meet minimum entry requirements to PHES Sixth Form:

- At least a Grade 6 (Grade B) at IGCSE in the subjects to be studied in Year 12
- A minimum of a Grade 4 (Grade C) pass at IGCSE in English Language and Mathematics, although a minimum of a Grade 6 (Grade B) is required if either subject is to be studied in Year 12
- In total, a student must have achieved a minimum of four passes at a Grade 6 (Grade B) or above at IGCSE level and two passes at a Grade 4 (Grade C) or above at IGCSE level

Provisional places will be made based on a successful interview and achievement of prerequisite grades.

| | | | |
|--------------------|--|-------------------|--|
| Student Signature: | | Parent Signature: | |
| Date: | | Date: | |





Park House English School

Part of
 International
Schools
Partnership

ONE OF THE OLDEST AND MOST RESPECTED SCHOOLS IN QATAR

PRIDE

www.parkhouseschool.com
info@parkhouseschool.com
