



Park House
English School

Orientation 2019

18th/19th June 2019

Welcome to the Park House Family

Established 1994

Current site 2005



مدرسة المنتزة الانجليزية
PARK HOUSE ENGLISH SCHOOL



مدرسة المنتزة الانجليزية
PARK HOUSE ENGLISH SCHOOL

Introductions

Mr. Brian Allen - Head of Primary

Ms Lisa Anderson - Deputy Head of Primary

Mrs Annerien de Wet - Assistant Head of Primary

Ms Sarah Cortez - Primary School Administrator



The school day

7.40 - Years 3-6 line up in playground

- Years 1 and 2 must be taken to classroom by a responsible adult
- registration

8.00 – Formal teaching begins

10.00 – Break/snack time

1.15 – KS1 (non-siblings) dismissed,
collected by parents/responsible adult

1.30 – KS2 released



The school day

Please be prompt

At the end of the day pupils whose parents are delayed will be taken to 'the late step'



Curriculum

The school is structured into year groups to comply with the English National Curriculum, which is taught throughout the school.



Curriculum

Key Stage	Year	End of year assessments	Age
EYFS	Nursery	Internal school moderation, Baseline testing	3 - 4
	Reception		4 - 5
KS1	Year 1		5 - 6
KS2	Year 2	Internal school assessments, GL Assessments (Maths and English)	6 - 7
	Year 3		7 - 8
	Year 4		8 - 9
	Year 5		9 - 10
KS3	Year 6	Internal school assessments, GL Assessments (Maths and English)	10 - 11
	Year 7		11 - 12
	Year 8		12 - 13
KS4	Year 9	IGCSE	13 - 14
	Year 10		14 - 15
KS5	Year 11	AS – level	15 - 16
	Year 12		16 - 17
	Year 13	A – level	17 - 18



Curriculum

During the school day pupils will receive:

- Maths*
- English*
- IPC
- PE/Swimming
- Arabic/French
- Music
- IT



Curriculum

For PE days children in Reception to Year 5 come in dressed in the PE kit and do not need to change. It saves time.

Year 6 need to change in the changing room.



Homework

1. Reading
2. Spelling
3. Maths
4. English
5. IPC
6. Arabic



After school activities

Years 1 to 6 are offered a range of both unpaid and paid activities covering both indoor and outdoor activities in the afternoon normally between 1.45pm – 2.45pm.

- Unpaid, by teaching staff
- Paid, EVO Sports



After school activities

In previous years the following have been offered:

Swimming

French Songs &
Games

Drawing

Board Games

Bounce Back

Drama

Football

Basketball

Chess & Draughts

Newspaper club

Netball

Art & Craft



A few things

- Please be prompt when collecting children, make sure they are here for the start of school
- Make sure your child has everything when they come to school in the morning, PE kit, lunch, school bag.
- All parents and visitors must report to the front office if visiting the school during the school day.



A few things

- No telephones, Ipads or other electronic items are allowed in classrooms.



Collecting students

- If a child has to leave school before the end of the school day
- Inform the school in advance that you will be collecting your child and what time they will be collected.
- Once arriving at school provide ID to security at the main gate and receive a visitor's pass.
- Report to the school office to collect the waiting children. The office will then issue an early leavers pass.
- Go to security at main gate, hand in the early leaver's pass and visitor's pass, receive ID and exit with child.
- **Early collection will not be facilitated without advance notification, after 1:00pm.**



Drinks and Snacks

- Do please ensure that your child has two drinks – carried in a non-breakable container. Glass bottles and cans are not suitable. Sensible food should be provided – no chocolate or sweets. We suggest a sandwich and a piece of fruit. All lunch boxes should be clearly marked.
- Kidz Kanteen will provide lunch/snacks delivered to the classroom. An order form is sent home weekly and should be returned to the class teacher with payment.



Drinks and Snacks

We have a NO NUT policy at school so please ensure all items are nut free including cereal bars, this also includes Nutella.



Celebrations

- We wish to share birthdays with our children.
- However, we do have a number of children with severe food allergies.
- **Birthday cakes** are not allowed and any treats that do come in will be distributed at the end of school.
- We do not hold birthday parties in school.
- If invitations to parties are handed out in school then we ask that everyone in the class is given one. We are inclusive.



Absence

- If it is known in advance that a student will be absent it is important that the school be informed by email or telephone.
- In the case of illness a letter from a recognised medical practitioner is required for absence of more than 3 days duration.

<https://www.nhs.uk/Livewell/Yourchildatschool/Pages/Illness.aspx>



Absence

Mail – Brian.Allen@park x General (Year 6 Admin) x bwallen59@yahoo.co.uk x Inbox - allenbrian59@g News, sport and opinio x Is my child too ill for scl x + - X

https://www.nhs.uk/live-well/healthy-body/is-my-child-too-ill-for-school/ ☆ B ⋮

Schools — Weave E... Netflix Users Home - Billing & Pa... Settings Testwise Reporting... Mail – Brian.Allen@... Imported bwallen59@yahoo... » Other bookmarks

Body ▾ Head ▾ Seasonal health ▾ Self-help tips ▾

Is my child too ill for school?

It can be tricky deciding whether or not to keep your child off school, nursery or playgroup when they're unwell.

But there are [government guidelines](#) for schools and nurseries that say when children should be kept off school and when they shouldn't.

If you do keep your child at home, it's important to phone the school or nursery on the first day. Let them know that they won't be in and give them the reason.

If your child is well enough to go to school but has an infection that could be passed on, such as a cold sore or head lice, let their teacher know.

Page contents

- [Chickenpox](#)
- [Cold sores](#)
- [Conjunctivitis](#)
- [Coughs and colds](#)
- [Ear infection](#)
- [Fever](#)
- [Hand, foot and mouth disease](#)
- [Head lice and nits](#)
- [Impetigo](#)
- [Ringworm](#)
- [Scarlet fever](#)
- [Slapped cheek syndrome \(fifth disease\)](#)
- [Sore throat](#)
- [Threadworms](#)



Absence

Mail - Brian.Allen@park X General (Year 6 Admin) X bwallen59@yahoo.co.uk X Inbox - allenbrian59@g X News, sport and opinio X NHS Is my child too ill for scl X + - □ X

← → ↻ https://www.nhs.uk/live-well/healthy-body/is-my-child-too-ill-for-school/#head-lice-and-nits ☆ B ⋮

Schools — Weave E... Netflix Users Home - Billing & Pa... Sitings Testwise Reporting... Mail - Brian.Allen@... Imported bwallen59@yahoo... » | Other bookmarks

- [Fever](#)
- [Hand, foot and mouth disease](#)
- [Head lice and nits](#)
- [Impetigo](#)
- [Ringworm](#)
- [Scarlet fever](#)
- [Slapped cheek syndrome \(fifth disease\)](#)
- [Sore throat](#)
- [Threadworms](#)
- [Vomiting and diarrhoea](#)

You don't need to keep your child off school if they have [threadworms](#).

Speak to your pharmacist, who can recommend a treatment.

Vomiting and diarrhoea

Children with [diarrhoea or vomiting](#) should stay away from school for 2 days after their symptoms have gone.

Page last reviewed: 13/02/2018
Next review due: 13/02/2020

NHS [NHS sites](#) [About us](#) [Contact us](#) [Profile editor login](#)

[Sitemap](#) [Accessibility](#) [Our policies](#) [Cookies](#) © Crown Copyright



Learning goals

8 IPC Personal Goals

1. Enquiry
2. Resilience
3. Morality
4. Communication
5. Thoughtfulness
6. Cooperation
7. Respect
8. Adaptability



Get involved

- PTA
- International Day (photos)
- Pink Day
- ECAS



International Day



Uniform

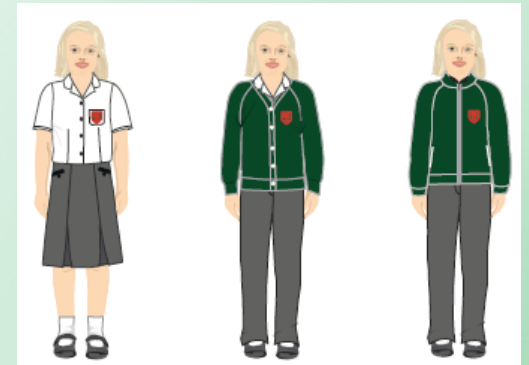
Everything should be clearly labelled with
name and class



Uniform

Girls

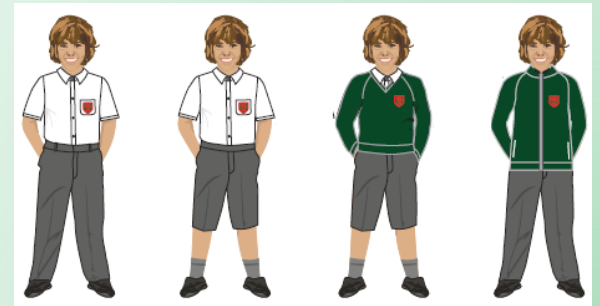
- White blouse with school logo
- Grey Skirt or trousers
- Bottle green cardigan or V-neck pullover
- Polar Fleece (optional)
- Grey or White socks
- Grey or white tights in winter



Uniform

Boys

- White shirt with school logo
- Grey shorts or trousers
- Bottle green V-neck pullover
- Polar Fleece (optional)
- Grey socks



Uniform

Accessories

- Green School bag
- Library bag (Year 1 – Year 6)
- PE bag
- Green Cap



Uniform

PE Clothes

- Green / White Sports Kit
- Black Leggings (optional)
- White socks
- Training shoes with non-marking soles



Uniform

NOBLEHOUSE TRADING

1. To purchase school uniform, please visit our Noble House Trading Retail Shop at Barwa Commercial Avenue, Safwa Building - (before TechnoQ and QIB Bank) You can find our location on google maps and waze under: Noble House Trading
2. Or you can order online 24/7 Simply log on to www.noblehouseqatar.com ; select your school, create an account if you are a new user and enter the access code PHES1301 Purchased items can be delivered at our shop or straight to your home at a fee of QAR 70



Footwear

Girls and boys should wear plain black leather (or leather style) shoes.

No training shoes, gym shoes or flip-flops.



Communication

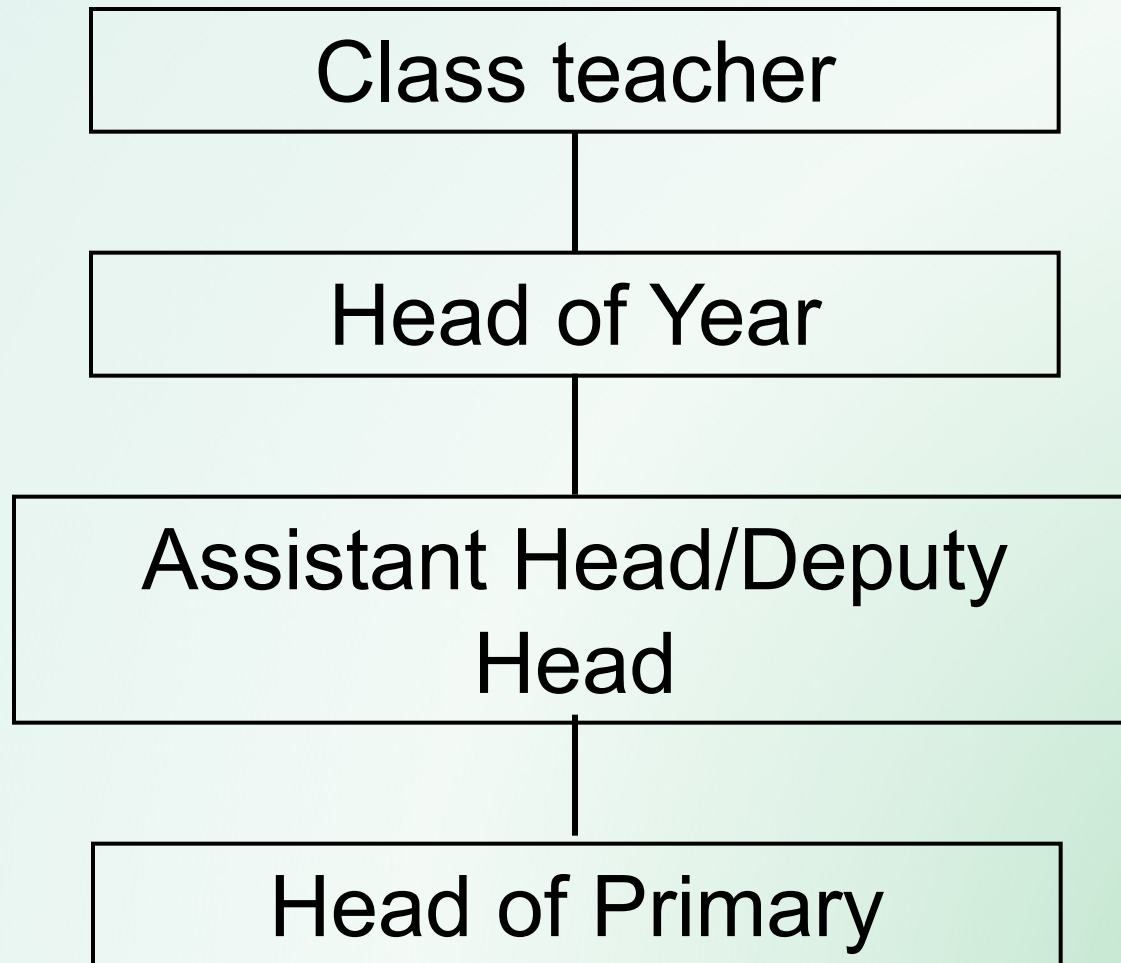
First point of contact is the class teacher through homework diary or email: eg

- `firstname.surname@parkhouseschool.com`
- `info@parkhouseschool.com`

We do not give out telephone numbers and staff are advised not to engage in WhatsApp groups



Communication



Communication

Social Media



Communication

- Facebook
- Twitter
- Instagram
- Dojo



Communication

- Three reports per year
(December/March/June)
- Meet the Teacher evening (September)
- Two parent evenings (October/January)



First day of term

- School will start at 7.40 but teachers in rooms from 7.20
- Class lists and map of rooms will be posted at front of primary school.
- New pupils with parents can go straight to class at 7.20.
- Parents should not 'hang around'.



Finally....

Questions?



مدرسة المنتزة الانجليزية
PARK HOUSE ENGLISH SCHOOL