

# Meet and Greet September 2024

## Year 2



Park House  
English School



**PHILIP JOHNSON**  
Head of Year/Year 2S



**HAYLEY MILLER**  
Year 2H



**LAUREN MAYER**  
Head of English/Year 2



**LOUIS MILNE**  
Year 2P



**NILZA BEVE**  
Learning Assistant



**Aline Nunes**  
Learning Assistant



**RANDA ABOU NAIF**  
Learning Assistant



**SHEENA TUBELLO**  
Learning Assistant



**Park House**  
English School

Other members of staff you need to know



Mrs Hilton  
Head of Primary



Mrs Stuart  
Primary Deputy Head



Mrs Johnson  
Assistant Head- Inclusion



Park House  
English School

Our school follows English National Curriculum and EYFS curriculum, which is taught throughout the school. We study the subjects below:

- Maths
- English
- Phonics
- IPC (Global Citizenship, Art, History and Geography)
- Science- this is a change this year to separate from IPC
- Music
- Computing through all subjects
- PE
- Languages- Arabic, French and Spanish
- Qatar History
- PSHE
- Islamic Studies for Muslim students



Park House  
English School

## Timetables

Personalised timetables are available in your child's planner.

## Curriculum Map

This terms curriculum map is available on the school website.



---

Park House  
English School



Park House  
English School

# PRIDE

Perseverance



Responsibility



Independence



Dedication



Engagement



**PRIDE**



---

Park House  
English School

## PRiDE:

At Park House English School, we take PRIDE in all aspects of our learning and development: PRIDE in our studies, PRIDE in our behaviour, PRIDE in our uniform, PRIDE in our environment, PRIDE in our relationships with others and PRIDE in our school.

What does PRIDE stand for?

**PERSEVERANCE:** Being resilient, even when faced with difficult or challenging circumstances.

**RESPONSIBILITY:** Taking responsibility for my learning, my attitude, my progress and my behaviour. Becoming a global citizen and being kind, caring and respectful in all I do.

**INDEPENDENCE:** Becoming a confident and independent learner. Always giving my best and taking ownership for overcoming my own difficulties and challenges.

**DEDICATION:** Knowing that developing knowledge, skills and understanding requires determination, effort and commitment to be truly successful.

**ENGAGEMENT:** Having enthusiasm, passion and a love for learning, both inside and outside of the classroom.



Park House  
English School



# Reading

## How can parents support?

Children have been given 2 reading books and a planner.  
The expectation is that they should be reading daily for **10 minutes** at home.

Parents should record their reading in the planner daily with a comment and when they are in school this will be stamped by the teacher.

**Planners should be brought to school every day.**



Park House  
English School

# Attendance and punctuality

Children should be in class by **7:30** for registration. Any time after this they are considered late.

The front school gate opens at 7:00 for a staggered drop off. They cannot arrive before then as staff are not on duty, the side gate for EYFS and KS1 opens at 7:10. (EYFS and KS1 can come into the front gate at 7am)

Once the weather cools down, the children will not be allowed inside the building until 7:20am and will wait on the playground.

For now, they will be allowed into the auditorium.

Pick up is at **12 for nursery/14:10** for everyone else **must** be prompt.



Park House  
English School

# Use of TEAMS

- Year group information is posted on TEAMS.
- Homework is sent via TEAMS on Thursdays.
- Children should not be in communication with each other via TEAMS.
- Parents should not message teachers via TEAMS.

Emails should be sent to communicate with your child's teacher.



Park House  
English School

# Homework

Homework will be sent every Thursday via TEAMS.

Reading should also take place every day and please sign your child's planner.



Park House  
English School

# Assessments

We are always assessing the children through AfL but below outlines year group expectations. Arabic, Islamic and Qatar History exams have schedules that are sent out before any testing – this is dictated by the ministry.

Key Stage	Year	End of year assessments	Age
EYFS	Nursery	Internal school moderation, Baseline testing	3 - 4
	Reception		4 - 5
KS1	Year 1		Internal school assessments, GL Assessments (Maths and English)
	Year 2	6 - 7	
KS2	Year 3	7 - 8	
	Year 4	8 - 9	
	Year 5	9 - 10	
	Year 6	10 - 11	



Park House  
English School

# Reporting

## Meet the Teacher (today)

Three reports per year (November/February/June)

1st report - settling in report.

2nd report - in depth report with targets.

3rd report - summary report.

Three parent evenings (December/March/June) all completed online



Park House  
English School

# Your child's learning.

We will host various opportunities throughout the year to enrich your child's learning.

- Entry and Exit points
- Open afternoons
- Assemblies
- Trips and visitors



Park House  
English School



# Inclusion Department



Park House  
English School

- **Accessing Learning Challenges:**

- Despite class support, some students face difficulties in class.
- Inclusion Teams step in for additional assessments and support.

- **Collaborative Approach:**

- Parental support and collaboration are integral to student success.
- We value parents as key partners in their child's educational journey.

- **Transparent Communication:**

- Regular updates on student progress are provided.
- Parents are invited to participate in review meetings to discuss their child's development and next steps.





# Reminders

No telephones, iPads, iWatches or other electronic or expensive items allowed in school.

If there is a reason your child is bringing a device this **MUST** be communicated with the class teacher.

Policies and agreements with expectations are then shared with the parent.

The school does not take any responsibility for children's personal items.



Park House  
English School

# Reminders

Please ensure that your child has a **refillable water bottle**. Glass bottles and cans are not suitable. Sensible food should be provided – no chocolate or sweets.  
All lunch boxes should be clearly marked.

We have a **NO NUT** policy at school so please ensure all items are nut free including cereal bars, this also includes Nutella.



Park House  
English School

# Other Information

## **Swimming**

Please ensure that your child has:

- Swimming suit/shorts
- Goggles
- Swim cap
- Towel
- Flip flops/sliders (in case of fire)

## **Reading books**

Please ensure that reading books are brought to school every day. We will be using them during morning activities.

## **Laces or Velcro shoes**

Please ensure that if your child cannot tie their laces, they should wear Velcro shoes to school.



Park House  
English School

# Communication

First point of contact is the class teacher through email  
**NOT** via TEAMS:

[philip.johnson@parkhouseschool.com](mailto:philip.johnson@parkhouseschool.com)

We do not give out telephone numbers and staff are not to engage in WhatsApp groups, this includes with the class reps.

Mrs Hilton is holding a meeting with class reps about expectations.

Teachers respond within 48 hours. No emails will be sent on weekends or after 3pm.



Park House  
English School

# Celebrations

We wish to share birthdays with our children.

However, we do have a number of children with severe food allergies.

**No food will be given out by teachers.**

**Individual party bags can be sent in.**



Park House  
English School

# Class Representative

Every class has a class rep, who sets up a whatsapp group and communicates with the teachers about whole class matters.

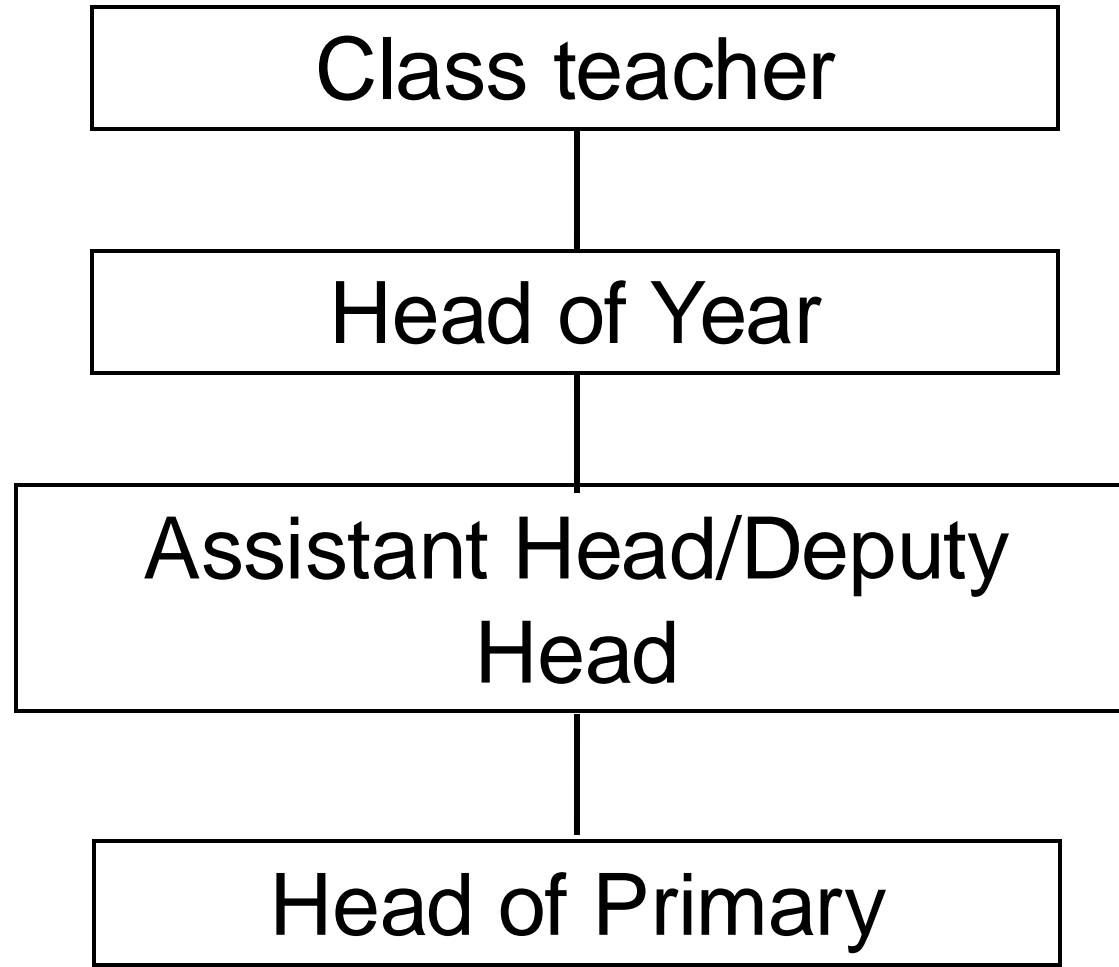
This is not for individual child concerns.



Park House  
English School



# Communication



Park House  
English School

Communication

Social media platforms at Park House:

Facebook

Twitter

Instagram

Our school website has information on everything school related.



Park House  
English School



New Primary Handbook with all info here.



---

Park House  
English School

# PHES Designated Safeguard Leads and Deputy Safeguard Leads

**SAFEGUARDING AT PARK HOUSE**   
**WE ARE HERE TO HELP.**  
**WE ARE HERE TO LISTEN.**

   
**Natasha Hilton** Head of Primary      **Chris Perry** Head of Secondary

**The people in these pictures are here to help you. If you have a worry or concern about anything, be it about yourself, a friend or something at home, they are here to listen.**

    
**Anna Stuart** Primary Deputy Head      **Claire Sharkey** EA to Principal      **Caroline Awad** MoEHE Coordinator

    
**Michael MacDonald** Secondary Assistant Head      **Jack McGuire** Secondary Assistant Head      **Kerry Walton** Secondary Assistant Head

**SAFEGUARDING AT PARK HOUSE**   
**WE ARE HERE TO HELP.**  
**WE ARE HERE TO LISTEN.**



**Training for parents will take place soon!**

**Any concerns please contact: [safeguarding@parkhouseschool.com](mailto:safeguarding@parkhouseschool.com) or you can complete a written sheet from Sandy at the reception desk.**